

Basic Demographic and Sacramental Information for the North Seattle Deanery Planning Process

Updated 2/12/2016

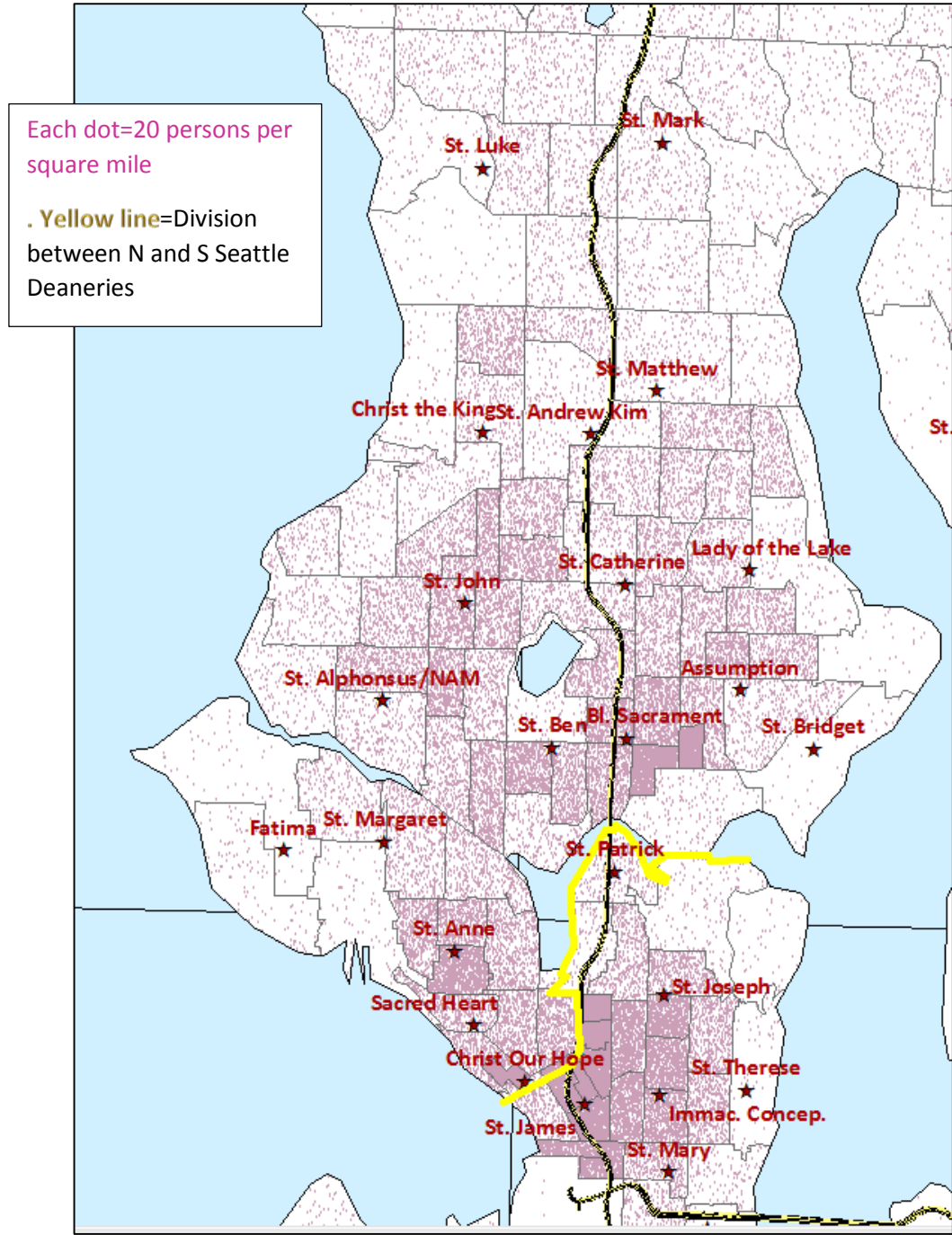
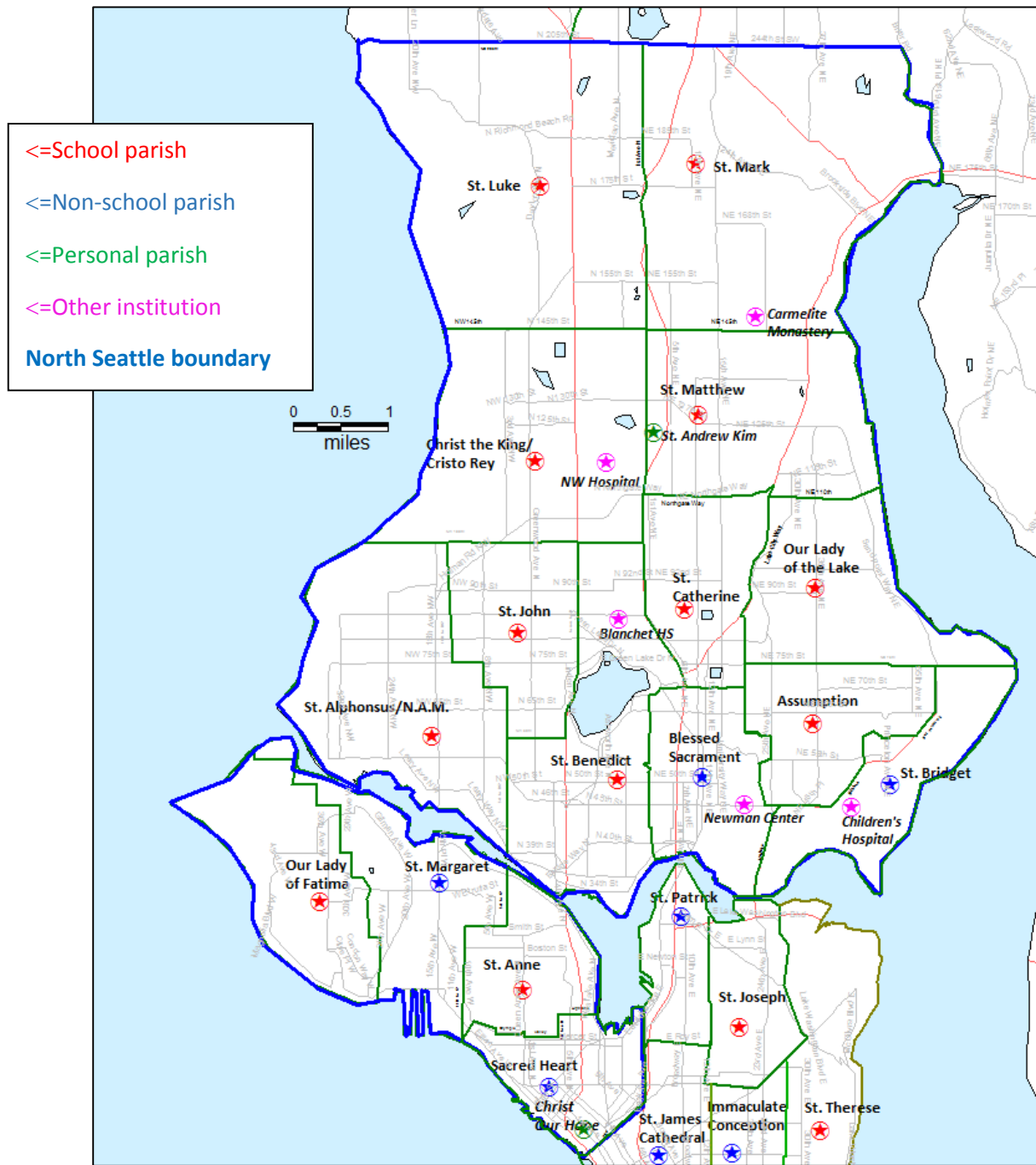
Office of Pastoral Planning and Research

Archdiocese of Seattle

Contents

- Page 2 Maps with parish boundaries and population**
- Page 3 Mass times and attendance, 2015, with percent of available seating capacity used for each Mass**
- Page 4 Sacraments reported in Parish Annual Reports 2014-**
- Page 5 Facilities for all parishes in the North Seattle Deanery (seating capacity of church, school enrollment and capacity)**
- Page 6 Parish staff included in UltiPro 1/1/16**
- Page 7 Population and Growth within Parish Boundaries (as projected by the Puget Sound Regional Council)**
- Page 8 Financial status of parishes at the end of 2014-15 fiscal year**
- Page 9 Selection of programs offered in the parishes 2014-15**

Maps of the North Seattle Deanery with boundaries and with population per square mile



Mass times and attendance, 2015, organized by geography and time slot

North Seattle Parishes organized geographically (N-S, W-E)	Church capacity 2015	Vigil		Early Sunday morning				Sunday mid-morning				Sunday afternoon or evening											
		Sat 5:00 p.m. on		Sun 6:00-7:55 a.m.		Sun 8:00-8:55 a.m.		Sun 9:00-9:55 a.m.		Sun 10:00-10:55 am		Sun. 11:00-11:55 a.m.		Sun. Noon-12:55 p.m.		Sun. 1:00-2:55 p.m.		Sun. 5:00 -5:55 p.m.		Sun. 6:00 -7:55 p.m.		Sun. 8:00 -8:55 p.m.	
		# attend	% capacity	# attend	% capacity	# attend	% capacity	# attend	% capacity	# attend	% capacity	# attend	% capacity	# attend	% capacity	# attend	% capacity	# attend	% capacity	# attend	% capacity	# attend	% capacity
24 St. Luke	570	209	37%					517	91%			368	65%										
26 St. Mark	657	266	40%	156	24%			331	50%			373	57%										
4 Christ the King	499	148	30%			175	35%			227	46%			482	97%								
28 St. Matthew	350	165	47%	135	39%			238	68%			235	67%										
14 St. Alphonsus	634	132	21%			122	19%			216	34%												
200 St. Andrew Kim	572	84	15%			116	20%			383	67%	173	30%				173	30%					
185 North American Martyrs	634					200	32%					271	43%										
22 St. John the Evangelist	436	145	33%			164	38%			225	52%												
16 St. Benedict	467					110	24%			244	52%						109	23%					
19 St. Catherine	416	131	31%			175	42%			233	56%					75	18%						
10 Our Lady of the Lake	800	151	19%					353	44%								149	19%					
3 Blessed Sacrament	650	175	27%	112	17%			246	38%	203	31%			209	32%			183	28%				
271 Newman Center	250									131	52%					32	13%	129	52%	167	67%	130	52%
2 Assumption	418	142	34%			252	60%			158	38%												
18 St. Bridget	660	114	17%			145	22%			132	20%												
8 Our Lady of Fatima	720	209	29%			148	20%			179	25%												
25 St. Margaret	150	34	23%			38	26%	179	119%					64	43%								
15 St. Anne	456	148	32%			70	15%			254	56%												
13 Sacred Heart	400	96	24%					105	26%			170	42%					101	25%				
Totals across parishes/groupings		2,347	28%	403	24%	1,714	28%	1,968	55%	2,584	42%	1,590	50%	754	44%	107	16%	843	27%	167	67%	130	52%
			Mass in Polish				Mass in Spanish																
			Mass in Latin				Mass in Korean																

Sacraments reported in Parish Annual Reports 2014-15

North Seattle Parishes organized geographically (N-S, W-E)		Infant baptisms	First Communion	Confirmations by AB	Adult converts	Marriages	Funerals
24	St. Luke	66	70	26	13	14	14
26	St. Mark	18	20	35	6	2	31
4	Christ the King	69	60	16	0	0	18
28	St. Matthew	9	18	1	0	0	16
14	St. Alphonsus	18	22	23	6	5	17
200	St. Andrew Kim	20	27	0	16	4	9
185	North American Martyrs	24	20	0	11	6	0
22	St. John the Evangelist	36	59	0	4	4	4
16	St. Benedict	14	21	13	2	3	12
19	St. Catherine	17	34	24	6	4	5
10	Our Lady of the Lake	45	0	22	4	7	20
3	Blessed Sacrament	74	25	25	14	73	22
2	Assumption	20	31	0	7	2	17
18	St. Bridget	43	0	1	1	2	11
8	Our Lady of Fatima	21	46	12	5	1	24
25	St. Margaret	6	0	0	0	4	6
15	St. Anne	34	38	18	5	6	15
13	Sacred Heart	11	0	0	6	5	7
Totals across parishes		545	491	216	106	142	248

Facilities for all parishes in North Seattle geographic location (seating capacity of church, property owned by parish, school sponsorship, school statistics)

North Seattle Parishes organized geographically (N-S, W-E)		Totals 2014-15					Diocesan-owned property		Parish School					
		# Masses 2015	Average attend 2015	Church capacity	Total capacity	Total capacity used / weekend	Sq. Feet	Acres	Capacity	2015-16 enrolled	% capacity	% Catholic	% Hispanic	# professional staff
24	St. Luke, Shoreline	3	1,093	570	1,710	64%	481,476	11.1	398	342	86%	76%	5%	27
26	St. Mark, Shoreline	4	1,125	657	2,628	43%	275,722	6.3	282	153	54%	82%	1%	14
4	Christ the King, Seattle	4	1,032	499	1,996	52%	206,084	4.7	253	210	83%	68%	11%	21
28	St. Matthew, Seattle	4	773	350	1,400	55%	244,206	5.6	275	208	76%	83%	5%	26
14	St. Alphonsus, Seattle	3	470	634	1,902	25%	180,000	4.1	379	230	61%	70%	6%	25
200	St. Andrew Kim, Seattle	5	929	572	2,860	32%	134,463	3.1	None					
185	North American Martyrs, Seattle	2	471	634	1,268	37%	None							
22	St. John, Seattle	3	533	436	1,308	41%	122,510	2.8	545	530	97%	84%	8%	35
16	St. Benedict, Seattle	3	463	467	1,401	33%	90,000	2.1	261	214	82%	56%	3%	29
19	St. Catherine, Seattle	3.25	613	416	1,352	45%	133,339	3.1	284	246	87%	71%	4%	25
10	Our Lady of the Lake, Seattle	3	652	800	2,400	27%	130,050	3.0	305	288	94%	75%	6%	26
3	Blessed Sacrament, Seattle	6	1,127	650	3,900	29%	None							
2	Assumption, Seattle	3	552	418	1,254	44%	122,375	2.8	560	519	93%	92%	1%	32
18	St. Bridget, Seattle	3	392	660	1,980	20%	131,153	3.0	272	248	91%	87%	2%	19
8	Our Lady of Fatima, Seattle	3	535	720	2,160	25%	174,622	4.0	272	248	91%	87%	2%	19
25	St. Margaret, Seattle	4	315	150	600	53%	46,200	1.1	None					
15	St. Anne, Seattle	3	471	456	1,368	34%	121,600	2.8	262	263	100%	92%	3%	25
13	Sacred Heart, Seattle	4	472	400	1,600	30%	92,160	2.1	None					
Deanery totals		63.25	12,018	9,489	33,087	36%	2,685,960	61.7	4,076	3,451	85%	80%	5%	304

Red number indicates data not received or updated for 2015

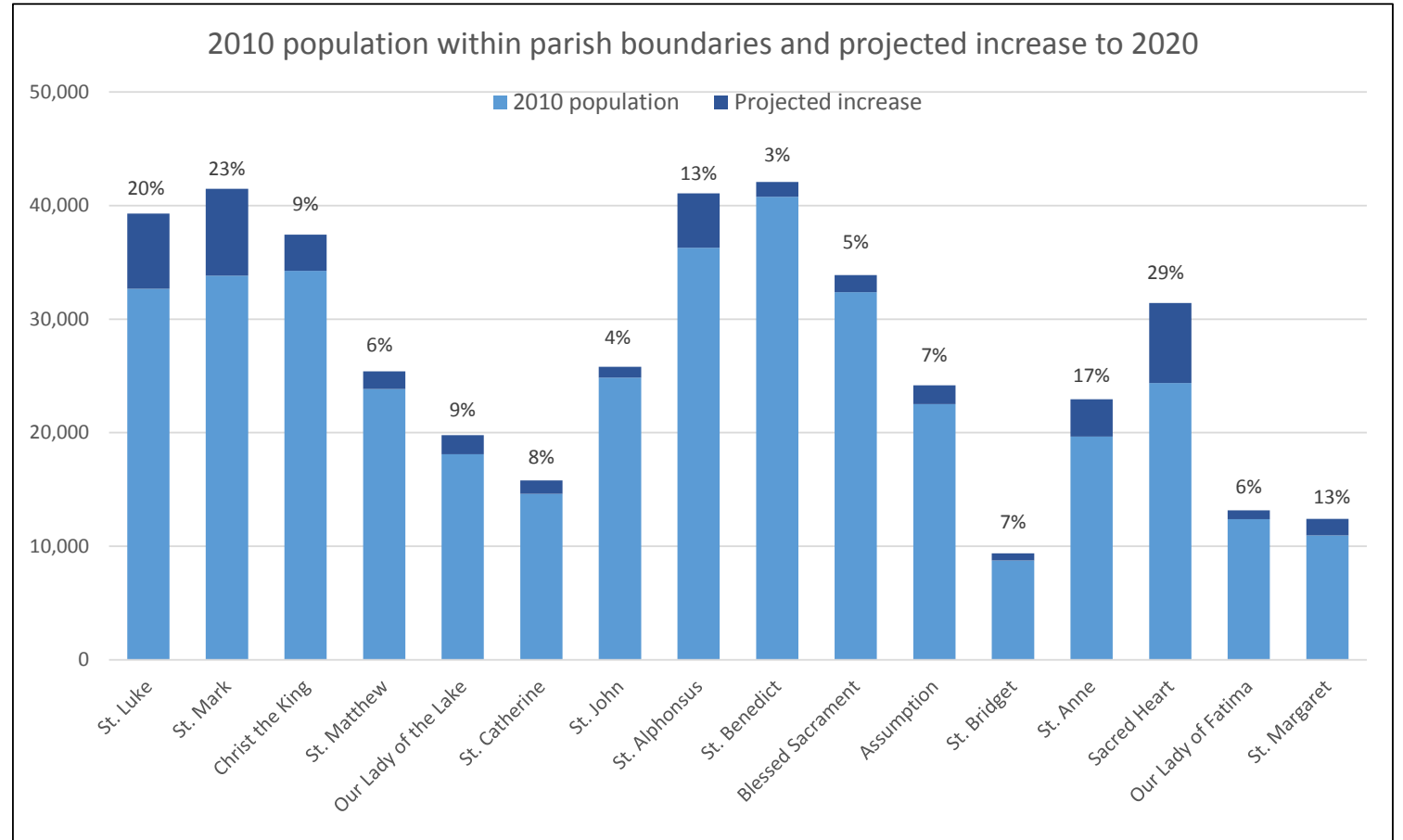
Parish staff included in UltiPro on 1/1/16

North Seattle Parishes organized geographically (N-S, W-E)	Total non-clerical staff	Pastoral leadership						Administration				Ministry			Liturgy/Music		Facilities	
		Pastor/Priest Administrator	Parochial vicar	Parish priest	Deacon	Pastoral Coordinator	Pastoral Associate	PAA /Business Manager	Development	Accountant / Bookkeeper	Office support	Faith formation / sacramental prep	Youth	Outreach / Service	Liturgy / Music Director	Choir director	Supervisor / Director	Custodian / Maintenance
24 St. Luke	3 FT, 4 PT	Diocesan						PT		FT		FT	FT		PT			2 PT
26 St. Mark	4 FT, 3 PT	Diocesan						FT			FT	2 PT		FT	PT		FT	
4 Christ the King	5 FT, 2 PT, V			2 RO	V	FT			PT	2 FT, PT		FT					FT	
28 St. Matthew	3 FT	Diocesan						FT			FT							FT
10 Our Lady of the Lake	5 FT, 1 PT, ½ V	Extern						FT			FT	FT, PT		FT		FT		FT
19 St. Catherine	3 FT, 4 PT	Diocesan						FT		PT	2 PT	PT		FT			FT	
22 St. John the Evangelist	6 FT, 2 PT	Extern						FT		PT	2 FT						3 FT, PT	
14 St. Alphonsus	3 FT, 1 PT	Religious order						FT			FT					FT	PT	
16 St. Benedict	5 FT, 1 PT			Dio		FT (Deacon/PC)	FT			FT	PT		FT				FT	
3 Blessed Sacrament	8 FT, 1 PT	Religious order	3 RO				FT			2 FT	2 FT		PT	FT		FT	FT	
2 Assumption	2 FT, 2 PT	Diocesan						FT			PT			PT			FT	
18 St. Bridget	4 FT, 2 PT, ½ V	Extern								FT	PT	FT, PT		FT		FT		
15 St. Anne	6 FT, 3 PT			Dio		FT	FT	FT	FT	2 PT		FT	FT				PT	
13 Sacred Heart	4 FT	Religious order	RO				FT			FT		FT					FT	
8 Our Lady of Fatima	4 FT, 1 PT	Diocesan						FT		FT		FT					FT, PT	
25 St. Margaret	2 FT	Religious order									2 FT							
200 St. Andrew Kim	3 FT	Extern						FT				2 FT						
185 North American Martyrs	1 PT	Religious order									PT							

Fulltime = 30+ hours/week (bold); Part-time=< 30 hours/week (Italics). V=Volunteer deacon

Population and Growth within Parish Boundaries (as projected by the Puget Sound Regional Council)

Parishes (ordered geographically)		Population		Increase 2010-20	
		2010	2020	Percent	Number
24	St. Luke, Shoreline	32,687	39,292	20.2%	6,606
26	St. Mark, Shoreline	33,831	41,484	22.6%	7,652
4	Christ the King, Seattle	34,248	37,450	9.3%	3,202
28	St. Matthew, Seattle	23,857	25,404	6.5%	1,547
10	Our Lady of the Lake, Seattle	18,116	19,773	9.1%	1,656
19	St. Catherine, Seattle	14,621	15,804	8.1%	1,183
22	St. John, Seattle	24,855	25,793	3.8%	939
14	St. Alphonsus, Seattle	36,286	41,074	13.2%	4,787
16	St. Benedict, Seattle	40,770	42,070	3.2%	1,299
3	Blessed Sacrament, Seattle	32,384	33,885	4.6%	1,501
2	Assumption, Seattle	22,511	24,182	7.4%	1,671
18	St. Bridget, Seattle	8,743	9,369	7.2%	626
15	St. Anne, Seattle	19,668	22,939	16.6%	3,270
13	Sacred Heart, Seattle	24,373	31,414	28.9%	7,041
8	Our Lady of Fatima, Seattle	12,383	13,153	6.2%	770
25	St. Margaret, Seattle	10,963	12,416	13.2%	1,453
200	St. Andrew Kim, Seattle	Non-territorial			
185	North American Martyrs, Seattle	Non-territorial			



**Financial status of
parishes at the end of
2014-15 fiscal year**

North Seattle Parishes organized geographically (N-S, W-E)		Parish Revolving Fund		Parish income 2014-15				Total expenses	Bottom line	
		Loan balance	Savings	Ordinary income	Income from building drive	Annual Appeal rebate	All other income			Total revenue
24	St. Luke		\$724,000	\$1,049,441	\$315,257	\$453	\$206,502	\$1,571,654	\$1,516,636	\$55,018
26	St. Mark		\$298,000	\$808,508		\$21,557	\$88,235	\$918,300	\$923,871	(\$5,571)
4	Christ the King		\$1,025,000	\$566,595	\$380,883	\$8,269	\$232,015	\$1,187,762	\$1,103,648	\$84,114
28	St. Matthew	\$696,000	\$211,000	\$575,469	\$10,190	\$36,440	\$179,205	\$801,303	\$793,668	\$7,635
14	St. Alphonsus		\$910,000	\$432,794	\$246,207	\$17,427	\$124,108	\$820,536	\$653,910	\$166,626
200	St. Andrew Kim			\$538,686			\$136,376	\$675,062	\$694,607	(\$19,545)
185	North American Martyrs			\$340,621			\$147,836	\$488,457	\$234,233	\$254,223
22	St. John the Evangelist	\$992,000	\$1,142,000	\$722,610		\$2,293	\$57,579	\$782,481	\$782,481	\$0
16	St. Benedict		\$745,000	\$398,090		\$4,229	\$137,444	\$539,763	\$543,994	(\$4,231)
19	St. Catherine		\$1,102,000	\$509,666	\$57,153	\$8,893	\$116,494	\$692,206	\$669,003	\$23,203
10	Our Lady of the Lake	\$262,000	\$337,000	\$765,637		\$31,265	\$81,801	\$878,703	\$915,396	(\$36,693)
3	Blessed Sacrament			\$910,498			\$1,011,259	\$1,921,757	\$1,559,922	\$361,835
2	Assumption	\$20,000	\$136,000	\$669,386		\$27,897	\$78,912	\$776,196	\$695,236	\$80,960
18	St. Bridget	\$20,000	\$332,000	\$812,221		\$16,592	\$34,686	\$863,499	\$1,053,134	(\$189,635)
8	Our Lady of Fatima		\$819,000	\$835,235		\$7,178	\$310,181	\$1,152,593	\$984,011	\$168,583
	St. Margaret		\$110,000	\$132,487		\$5,774	\$26,705	\$164,967	\$146,335	\$18,632
15	St. Anne		\$1,578,000	\$712,521			\$124,693	\$837,214	\$743,095	\$94,119
13	Sacred Heart			\$237,553		\$2,985	\$332,533	\$573,070	\$693,926	(\$120,856)

Selection of programs offered in the parish 2014-15

North Seattle Parishes organized geographically (N-S, W-E)		Returning Catholics	RCIA	Youth Ministy	Hospital / nursing home / homebound	Overnight Shelter Program	Soup Kitchen	Knights of Columbus	Society of St. Vincent dePaul	Boy Scouts/Girl Scouts
24	St. Luke		X	X	X			X	X	X
26	St. Mark		X					X	X	X
4	Christ the King		X	X	X (Sp)	X		X	X	
28	St. Matthew				X				X	
14	St. Alphonsus		X	X	X			X	X	
200	St. Andrew Kim		X	X						
185	North American Martyrs	X	X	X				X		
22	St. John the Evangelist		X	X	X	X		X	X	X
16	St. Benedict		X		X				X	X
19	St. Catherine		X		X		X		X	
10	Our Lady of the Lake		X		X				X	X
3	Blessed Sacrament		X	X	X		X	X	X	X
2	Assumption	X	X	X	X			X	X	X
18	St. Bridget		X		X					
8	Our Lady of Fatima		X		X	X		X	X	
25	St. Margaret		X (P)	X (P)	X					X
15	St. Anne		X		X				X	
13	Sacred Heart		X		X	X	X	X		

(-) = Program offered in another language. (C) = Chinese; (F) = Filipino; (L) Lao; (P) = Polish; (Sp) = Spanish; (V) = Vietnamese