

FR

CUR-B

SIDE WALK

8'6"

BED

6'

CURRENT

SIDE WALK

5'

2'0"

99th AVE. S.W.

10'

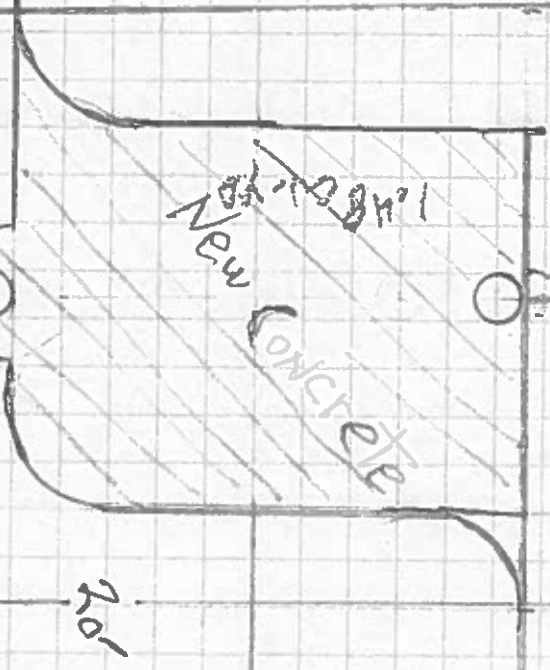
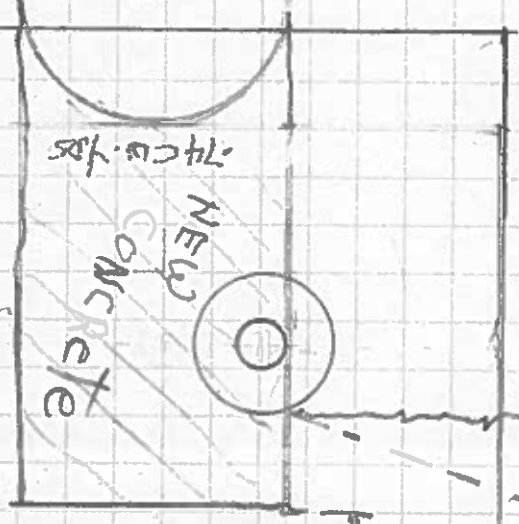
SIDE WALK

BED

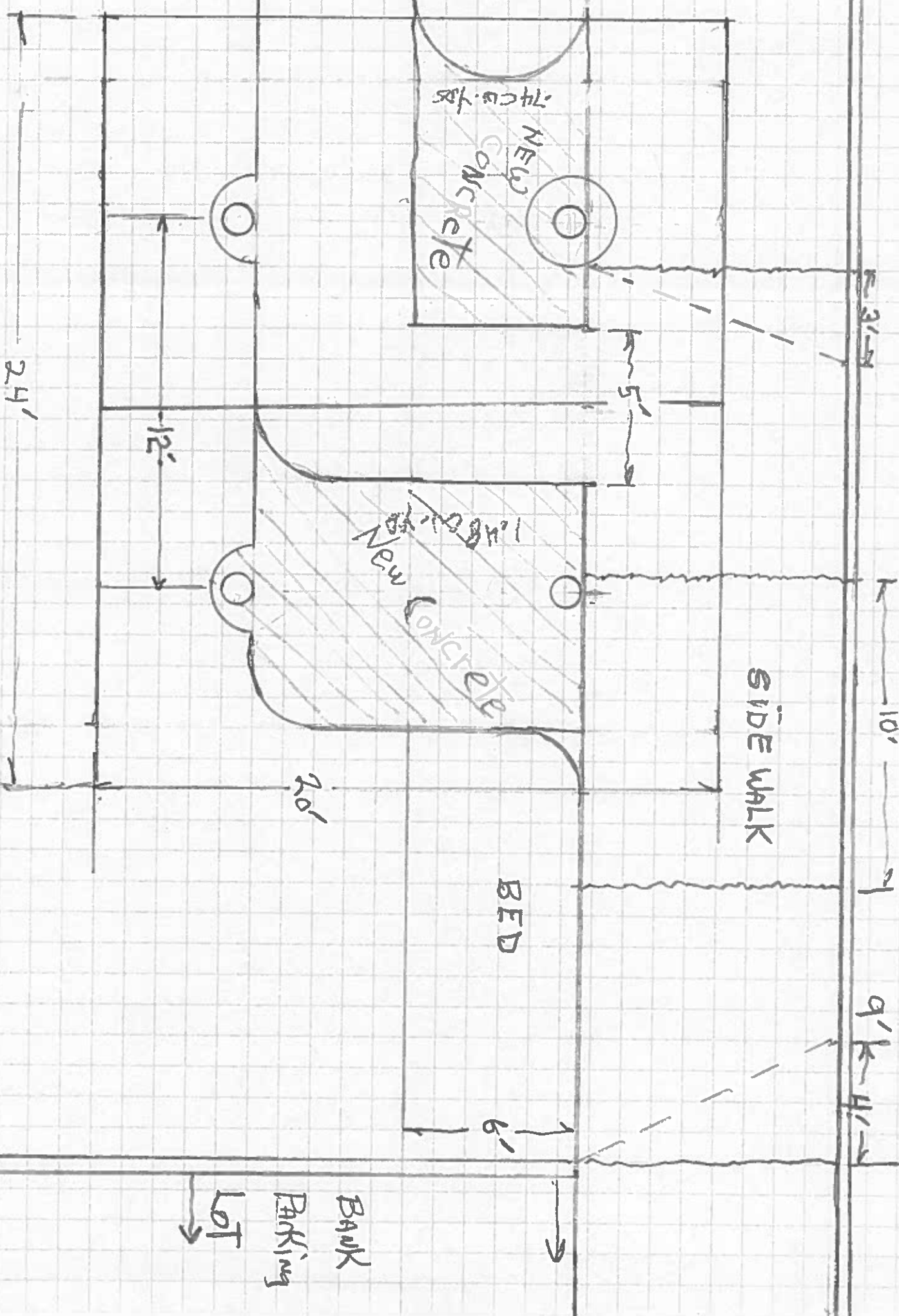
6'

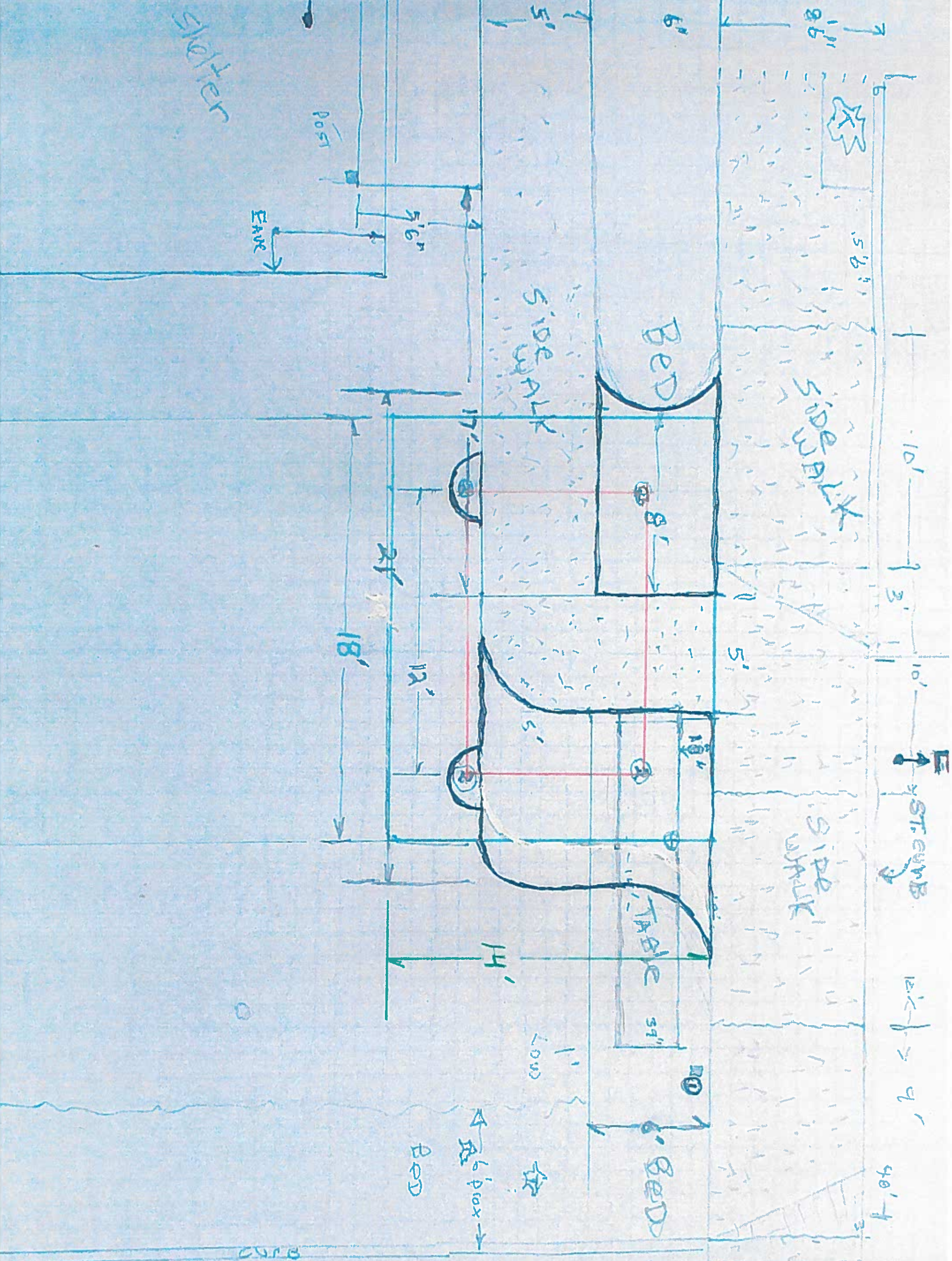
9'K-4'

BANK
PARKING
LOT



4' EAVES





Bank Parking Lot

- = 150. FT.
- = New Corner
- ✓ = EYE
- ① SIGN POST
- ② ALUM. PIPE
- ③ CORNER POST
- ✓ FRAMING