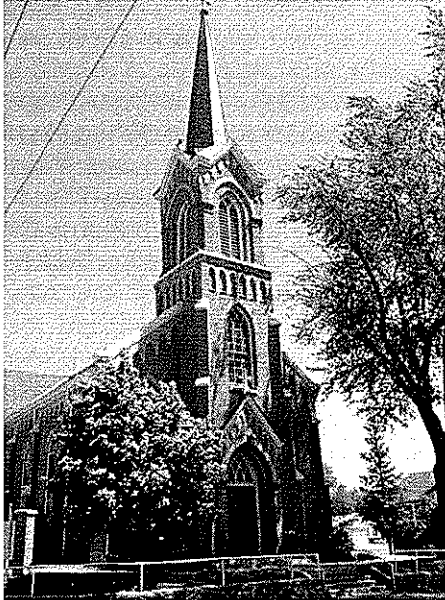


# SECOND SUNDAY IN ORDINARY TIME

January 14, 2018

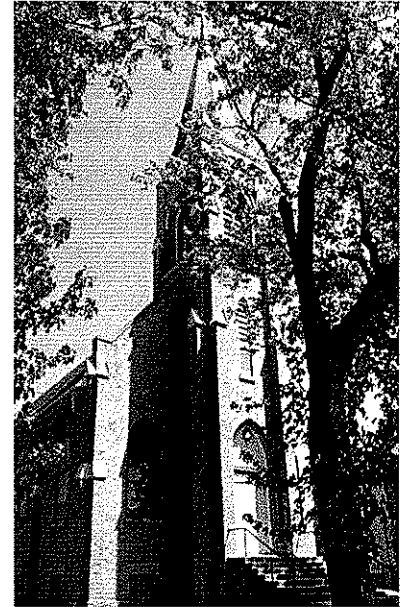
## All are Welcome!



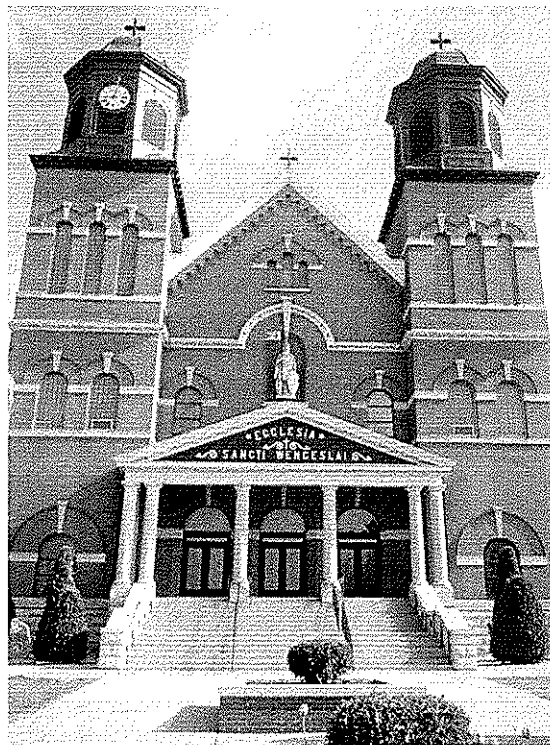
**St. John the Evangelist**

### Parish Mission Statement

*We are a Catholic community forming disciples of Jesus Christ dedicated to loving God through our worship, sharing the Good News, and loving service to others.*



**St. Scholastica**



**St. Wenceslaus**

## **NEW PRAGUE AREA CATHOLIC COMMUNITY** *Three Sites of Worship, One Community of Faith*

**Including St. Wenceslaus &  
The Western Catholic Community of St. John the Evangelist and St. Scholastica**

215 MAIN STREET EAST ■ NEW PRAGUE, MN 56071 ■ 952-758-3225 ■ NPCATHOLIC.ORG

**We welcome you...**

Welcome to the greater New Prague Area Catholic Community which includes the Church of St. Wenceslaus and the Western Catholic Community of St. John the Evangelist and St. Scholastica. We are happy you are here. Should you be visiting just for today, WELCOME! If you are seeking a church home, we would be honored to have you consider joining our faith community. If you are interested in a membership, please phone the parish office for assistance and registration. If you are over the age of 21, we ask that you register. Please feel free to stop by the parish office during office hours to register or you may do so online. Again, we are happy you are here.

**At the Church of St. Wenceslaus**

**PARISH OFFICE HOURS**

Monday – Friday 8:30 am to 4:00 pm

**MASS SCHEDULE**

**Weekend Masses**

Saturday..... 4:00 pm  
 Sunday..... 8:30 & 10:30 am

**Morning Word & Communion**

Monday & Tuesday ..... 8:00 am

**Weekday Masses**

Wednesday, Thursday & Friday ..... 8:00 am

**SACRAMENTS & OTHER INFORMATION**

**Anointing of the Sick**

Available to those who are seriously ill or suffering from a prolonged illness. Call 952-758-3225

**Confirmation**

Preparation required. Call 952-758-0477

**Reconciliation**

Saturdays at 3 pm in the church.

**Baptism**

Preparation required. Call 952-758-3225

**Marriage**

Six months to one year preparation time required.  
 Call 952-758-3225

**Rosary**

Monday – Friday 7:30 am & Saturday 8:00 am in the church.

**Fatima Prayer Cell**

Monday – Wednesday after 8 am service in the chapel.

**Adoration**

Friday 9:00 am to midnight in the chapel

**Early Morning Scripture Study**

Wednesday 6:45 to 7:50 am – Pius X Room in church basement.

**Fr. Kevin's Bible Study**

Saturdays 8:30 to 10 am – Pius X Room in church basement.

**Prayer Chain**

Judy: 952-758-2220 or Arnita: 952-758-4943

**From the Desk of Mary Higgins**

**Here I Am Lord**

“When it’s over, I don’t want to wonder if I have made of my life something particular, and real...I don’t want to end up simply having visited this world.” ~ Mary Oliver

“Here I am Lord. I come to do your will.” ~ Psalm 40:8a,9a

In today’s Gospel, the two disciples of John are intrigued by Jesus and seek him out. “What are you looking for?” he asks. When he invites them to come, they follow him to where he is staying and spend time with him. Andrew invites Peter, and he too accepts the invitation to follow Jesus. What was it about Jesus that attracted his first followers? What WERE they looking for?

Maybe Jesus spoke to a deep desire in their hearts to give their lives meaning and purpose. Whatever it was, it was enough to inspire them to make great sacrifices in accepting their part in the mission of Jesus to proclaim the kingdom of God. What is Jesus asking of us, and how can we know? We are busy, too many places to go and things to do, so many distractions. It’s hard to listen to the still, small voice inside each of us.

“Discipleship begins with dwelling in Christ, entering the place of his loving embrace, staying under the gaze of his tender mercy. It involves living with a heart open to love, a heart willing to change, a heart ready to serve, a heart disposed to pray, like Samuel, “Speak, for your servant is listening. The world is hungry not for busier people but bigger-hearted people.” ~ Fr. Daniel Groody

Surely each of the first disciples had their own personal relationship with Jesus, but he called them as a group, to encourage and support one another. Together they would discern how to move forward when he left them with the charge to make disciples and teach what he had taught them. We have the same charge. We have a need for that personal relationship developed through attentiveness to his voice, but also a need for companions on the journey.

Consider two intentions this Lenten season, which begins in one month. Let’s resolve to spend more time in quiet, listening to what Jesus has in mind for the particular life he has given each one of us. And let’s resolve to enlarge our hearts in loving service to others. Our parish Lenten discipleship groups might be a good way to start. Signups begin this weekend and continue through January.

**Mary Higgins**

*Pastoral Ministry Associate*

**New Prague Area Catholic Community**

# Western Catholic Community

## From the Desk of Deacon Bob

### Do You Hear Him Calling?

We all look for a "calling" in our lives. A calling is an innate sense of being drawn to something or someone. We can feel a calling to a career, like medicine, farming, caretaking, business, to name a few. We can feel called to a relationship with someone, a friend, or someone with whom we would like to be in a more significant relationship, e.g. spouse. Sometimes finding one's true calling can be very confusing to discern. A person may start studying or working in one area, and, because it does not "feel" right, change the area of study or the work they are doing. When I was in school, I knew a person who began with a major in mathematics but ended up majoring in music. I know another who was studying business in college but quit after a year or so, because he discovered he enjoyed and felt more fulfilled working in the building trades.

Today we hear of Jesus' call to the apostles to follow him. The call was so profound that they left their life occupations to follow him. At our Baptism, Jesus called you and me to follow him. At that time, our parents answered the call for us. At Confirmation, we personally made the decision to be disciples of Jesus. This calling by Jesus to be his disciple is not a one-time event in our lives. We are called every day by Jesus to be his disciple and follow him. Some people affirm strongly their commitment to be a disciple of Jesus. Some people are very wishy-washy about their commitment to discipleship. Others outright reject this call to discipleship by Jesus. As we discern what kind of disciple we may be, it is important for us to note that Jesus didn't call perfect people to follow him. He called some very imperfect people to follow him. However, in their answering his call to discipleship, they found it to be the pathway to perfection. As we listened to the Gospel for today, how do we see our commitment to follow Jesus today?

**Deacon Bob Wagner**  
*Pastoral Associate*  
**New Prague Area Catholic Community**

## Important Information

- Weekend Masses**  
 Saturday ..... 8:15 pm      St. John's  
 Sunday ..... 8:00 am      St. Scholastica  
 Sunday ..... 10:00 am      St. John's
- Weekday Masses**  
 Wednesday ..... 5:00 pm      St. John's  
 Thursday ..... 5:00 pm      St. Scholastica  
 ~ Except 1st Thursday of the month ~  
 Mass at Phillip Square at 4:00 pm

### SACRAMENTS & OTHER INFORMATION

- Reconciliation**  
 Wednesday ..... 4:30 pm      St. John's  
 Thursday ..... 5:30 pm      St. Scholastica  
 No Confession 1st Thursday  
 of the month at St. Scholastica  
 Saturdays & Sundays by appointment
- Baptism & Confirmation**  
 Preparation required. Call Fr. Dave Barrett
- Anointing of the Sick**  
 Call Fr. Dave Barrett
- Marriage**  
 Prep required. Call Fr. Dave Barrett
- Adoration**  
 Fridays 9:00 am to midnight at St. Wenceslaus Daily Chapel

**WESTERN CATHOLIC COMMUNITY OFFICE**  
 20087 Hub Drive, New Prague 56071  
 952-758-4642

**Rev. Dave Barrett**  
**Regional Associate Pastor**  
 952-758-0469 (O) 651-470-0970 (C)  
 Dave.Barrett@npcatholic.org

**Deacon Bob Wagner**  
**Pastoral Associate**  
 952-758-3225 (O) 612-703-0808 (C)  
 Bob.Wagner@npcatholic.org

**Hall Rental:**  
**Patty Giesen** 952-758-3008 or email:  
 kpgiesen@bevcomm.net

**Prayer Chain WCC:**  
**Carol Bauer** 952-873-6769  
**Noreen Giesen** 952-758-2608  
**Marlene Dohmen** 952-492-6879

### Mass Schedule Volunteers - St. John's & St. Scholastica

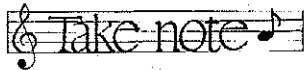
JANUARY 20 & 21, 2018	Saturday St. John's 8:15 PM	Sunday St. Scholastica 8:00 AM	Sunday St. John's 9:00 AM
<b>Lector</b>	MaryCarol Wolf	Karen Odenthal	Jim Widmer
<b>Eucharistic Ministers</b>	Kevin Giesen	Gary Odenthal, Ann Prochaska & Judy Pauly	Megan Giesen, Jill Holden & Jonila Weiers
<b>Servers</b>	Trenton & Joseph Huebl	Lydia Schmitz & Joe Schoenecker	Katelynn & Craig Brezina, Avery & Jordyn Marsh
<b>Gift Bearer Family</b>		Geraldine Odenthal Family	Ron Solheid Family

**Bulletin E-mail: [info@npcatholic.org](mailto:info@npcatholic.org)**  
**Website: <http://www.npcatholic.org>**

## PARISH AND AREA NEWS

### Annual Pro-Life Breakfast

The New Prague Knights of Columbus will have their annual Pro-Life Breakfast on Sun., Jan. 14th. It will be held at the KC Hall in New Prague, serving pancakes & sausage from 8 am until noon. A free-will offering is requested with proceeds going towards Pro-Life activities in the New Prague surrounding area.



There will be no choir rehearsals the week of Jan. 14-20.

### Council of Catholic Women News

Happy New Year Ladies of St. Wenceslaus and CCW members! Just a little reminder that we will be having a meeting on Mon., Jan. 15th at 8:30 am to bring in the New Year. Please join us for cinnamon rolls and coffee in the church basement. All Ladies are welcome!



### New Bible Study

A new Bible Study will meet at the Parish House on Wednesday mornings after Mass beginning January 17th and continuing each Wednesday thereafter at the same time and place. Bring your own Bibles. All are welcome! Any questions, call Susan Karan at (952) 471-3067.

### All People Deserve a Home

You are invited to a conversation on affordable housing on Thurs., Jan. 18th at 7 pm in the New Prague city hall upstairs meeting room. Area congregations working with Beacon Interfaith on Families Moving Forward will meet to reflect on the need for housing for families with limited income. How does our faith inform our actions? What can we do to be a part of the solution?

### Men's Group

The Men's Group will be meeting at the Parish House of St. Wenceslaus on Thurs., Jan. 25th at 7 pm. All adult male parishioners of St. Wenceslaus and the Western Catholic Community are invited. No advance reading is necessary but, if possible, please bring a Bible. Invite a friend. If you have any questions, please call David Karan at (952) 461-3067 or Bob Kehrwald at (952) 923-7545.



### Knights of Columbus Free Throw Contest

The New Prague Knights of Columbus will be sponsoring a Council Free Throw Contest on Sun., Jan. 28th from 1-2 pm. The contest is open to all girls and boys ages 9 through 14. The competition will be held at the St. Wenceslaus Parish Activity Center. You may register the day of the event; registration will begin at 12:30 pm. If you have any questions, please contact Jack Stasney at (952) 393-1043.



### God Bless the Newly Baptized

Welcome and congratulations to *Ella Susan Scheel*, daughter of Daniel & Julie Scheel, and *Claire Evelyn Tupy*, daughter of Martin & Sarah Tupy. We rejoice with your families on this joyful occasion!

### Lenten Discipleship Group Signup

Sign up for a Lenten Discipleship group from the comfort of your own home. Enter this link and it will take you there!

1. Go to <https://goo.gl/F4xt78> to get to the sign up.
2. Scroll through the offered dates and times. Please be aware, on the right hand side, it will state how many slots are available.
3. Once you find the one that works the best for you, click the sign up button on the right and scroll down to SUBMIT AND SIGN UP.
4. This will open up a new page. Here you can leave any comments and select how many people you would like to sign up. You will be required to fill in your name and email address for reminders. If you have used Signup Genius in the past, simply log in.
5. To finalize the signup you must hit SIGN UP NOW on the bottom of the page.
6. An email will be sent to you stating the date and time you signed up. It will also send you a reminder email once it gets closer to the date. If for some reason you cannot make it, just log back into the signup and delete your reservation.

If you have any questions please contact [laura.schoenecker@npcatholic.org](mailto:laura.schoenecker@npcatholic.org). Signups are also available in the back of church or by calling Laura at (952) 758-5131. JOIN A GROUP TODAY!

### SOUP SUPPER COMING SOON

Plans are continuing to host the 24th Annual Soup Supper here at St. Wenceslaus on Mon. evening, Feb. 19th. This is the primary fundraiser to support our monthly Soup Kitchen meals served at the Dorothy Day Center in St. Paul. There will be three different soups, various breads, and desserts. We hope you will be able to join us for your evening meal.

**He is your teacher,  
follow Him.**

### Discipleship Corner

**Why join the five-week study?** *We spend our time and energy on so many things... and a lot of them are very good BUT, what can be more important than growing our relationship with Jesus? Things of this world are temporary... eternity is... well... eternal!*

~ Laura

### I typically read from the Dynamic Catholic daily. Here is a statement that spoke to me:

*The mission entrusted to Catholics of every era is to transform the world they live, work, and play in. When we live the way the Gospel invites us to, we intrigue and inspire those around us to do the same ~ rippling from one person to the next.*

~ Kathy

### SUPPORT OUR PATRONS

who make this bulletin possible by their advertising.

This week we thank

**NEW PRAGUE FAMILY & SPORTS  
CHIROPRACTIC CENTER ~ DR. MIKE KILPATRICK**



## FAITH FORMATION AND YOUTH MINISTRY

**Chillfest 2018** is on the horizon ~ January 26-27 Who? All 6-7-8 graders! and a few parent chaperones. Cost? \$45 per person. What? FUN! Faith! OVERNIGHT LOCK-IN! It's all happening at the Chaska Community Center and St. Victoria Catholic Church. The absolute deadline to RSVP is Fri., Jan. 19th. For more information, contact Pamela Sherlock at (952) 758-0477 or [pamela.sherlock@npcatholic.org](mailto:pamela.sherlock@npcatholic.org).

**Passion Pantomime Auditions** will be February 11th at 12:30 pm at St. Wenceslaus Church. Come and see!

**Save the Date:** Coming soon this spring! Senior Youth Alive Retreat February 17-18 ~ Camp Victory! Contact Pamela for more information, (952) 758-0477 or [pamela.sherlock@npcatholic.org](mailto:pamela.sherlock@npcatholic.org).



## SCHOOL NEWS from SWS

### Snowman Celebration

Free indoor snow-themed fun! Hosted by St. Wenceslaus School 5th & 6th grade students. Thurs., Jan. 18th from 6-7:30 pm in the Parish Activities Center. All children under 6 years of age are invited to this fun-filled event!

### SWS Staff Showcase

**Jolene Busch** ~ Preschool Director Jolene is the Director and Lead Teacher of Little Saints Preschool at Faithful Beginnings. This is her 11th year teaching and she is back where she started at SWS! Jolene and her husband, Dan, have 4 children. Their oldest, Claire, was recently married and is now living in California with their son-in-law who is a United States Marine. Their daughter, Audrey, is a student at UWRF. Their son, Will is a high school sophomore, and their daughter, Erin, is in the 5th grade at St. Wenceslaus. When Jolene is not teaching, she loves to watch her son play baseball and her daughter play volleyball and dance. She also loves to play volleyball and of course READ!! Come and meet our preschool teacher at one of our upcoming open house nights and preschool registration on Jan. 29th or Feb. 6th 5:30-7 pm in the school.



### Feed My Starving Children MobilePack

It's that time of year again! Scott Equipment Company will be hosting a Feed My Starving Children MobilePack Jan. 17-20 at Friendship Church in Shakopee. We need MANY, MANY volunteers to reach our goal of packing 1 MILLION MEALS! Please consider signing up for a shift. This is a great opportunity for the youth to earn Service Hours for church or school, and it is a wonderful team-building activity, also! To register online, go to <http://www.fmsc.org/mobilepack/events>, look for the Shakopee, MN, Friendship Church MobilePack, and follow the links to sign up.

### PARISH FAMILY BINGO

Sun., Jan. 21st, Immaculate Conception Church Civic Center, Lonsdale. Lunch served starting at 11 am. Bingo Games start at Noon. Play bingo all afternoon for a cover charge of \$3. Extra cards available for 50 cents each. Bring the whole family for a Sunday afternoon of fun, food, and prizes! *Sponsored by the IC Council of Catholic women.*

### Czech Music

WHAT: ***Songs My Mother Taught Me, The 2nd concert of The Bakken Trio 2017-18 season***  
***"Compelled by Music...Passing It On!"***

A program that irresistibly pairs nostalgic melodies with exuberant rhythms, music well known and unknown.

WHERE: MacPhail Center for Music, 501 S. 2nd St., Minneapolis, MN 55401

WHEN: Sun., Jan. 21st, 4 pm

TICKETS: Tickets available at the door and on [www.bakkentrio.org](http://www.bakkentrio.org) (\$25 general, \$20 senior, \$15 student) CONTACT: Mina Fisher, Producing Artistic Director, [fritznmina@gmail.com](mailto:fritznmina@gmail.com) or (612) 374-3175.

### 9th Annual "Blankets Because We Care" Drive

Gently used or new blankets, coats, hats, mittens, or hygiene items (toothpaste, toothbrushes, deodorant, shampoo etc) are still being collected in the bin located in the back of church through Jan. 19th. Any monetary donations will be used to buy fleece to make additional blankets and/or a cash donation to Sharing and Caring Hands and the Children's Hospital of Minneapolis. Thanks so much for your generosity and God Bless!

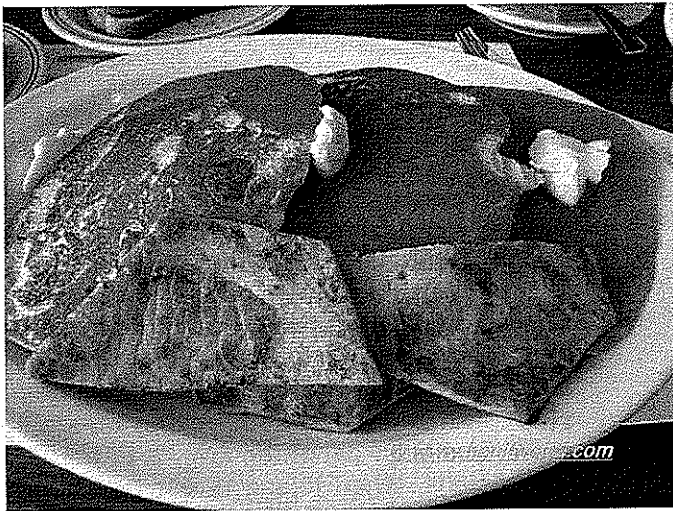
## WESTERN CATHOLIC COMMUNITY St. John's & St. Scholastica

No announcements for this week.



# St. Wenceslaus School Breakfast Sunday, January 21

Serving from 8 a.m.-12:30 p.m.  
in the St. Wenceslaus Church  
Basement.



Menu- pancakes, ham,  
juice, milk and coffee

Sponsored by the New Prague Council Knights of  
Columbus.

*A free-will offering is suggested.*

**LITURGIES & PRIEST'S MASS INTENTIONS**

INCLUDES ALL CHURCH LOCATIONS  
WEEK OF JANUARY 15-21, 2018

**Rosary at St. Wenceslaus**  
**MONDAY – FRIDAY at 7:30 am**  
**SATURDAY at 8:00 am**

**Monday, January 15**

8:00 am..... Word & Communion – SW

**Tuesday, January 16**

8:00 am..... Word & Communion – SW

**Wednesday, January 17**

8:00 am..... SWS Mass – SW

**Thursday, January 18**

8:00 am..... Word & Communion – SW

11:00 am..... Mass – Mala Strana

**Friday, January 19**

8:00 am..... Word & Communion – SW

**Saturday, January 20**

3:00 pm..... Confession – SW

4:00 pm..... Joseph & Margie Soukup, Evelyn Ambroz,

..... Adeline Schneider – Mass – SW

8:15 pm..... Mass – SJ

**Sunday, January 21**

8:00 am..... Marcella Kaufenberg

..... Lloyd Ambroz – Mass – SS

8:30 am..... Dennis Skluzacek,

..... Jack, Dennis & Marty Witt – Mass – SW

10:00 am..... Rosella Riesgraf, Andre Miller

..... Mass – SJ

10:30 am..... Mass – SW

11:45 am..... Baptism – SW

**STAFF DIRECTORY** NEW PRAGUE AREA CATHOLIC COMMUNITY

**Rev. Kevin Clinton**

*Pastor*  
952-758-3225  
Kevin.Clinton@npcatholic.org

**Rev. Dave Barrett**

*Regional Associate Pastor*  
952-758-0469  
Dave.Barrett@npcatholic.org

**Deacon Bob Wagner**

*Pastoral Associate*  
952-758-0463  
Bob.Wagner@npcatholic.org

**Mary Higgins**

*Pastoral Ministry Associate*  
952-758-0464  
Mary.Higgins@npcatholic.org

**Peter Guzulaitis**

*Parish Business Administrator*  
952-758-0465  
Peter.Guzulaitis@npcatholic.org

**Ruth Weinandt**

*Parish Accountant*  
952-758-0466  
*Faith Formation Assistant*

952-758-0486  
Ruth.Weinandt@npcatholic.org

**Laura Schoenecker**

*Faith Formation Director*  
*Pre-K through Adult*  
952-758-5131  
Laura.Schoenecker@npcatholic.org

**Pamela Sherlock**

*Youth Ministry & Confirmation Coordinator*  
952-758-0477  
Pamela.Sherlock@npcatholic.org

**Kim Doyle**

*St. Wenceslaus School Principal*  
952-758-3133  
Kim.Doyle@swsaints.org

**Jolene Busch**

*Preschool Director*  
952-758-0480  
Jolene.Busch@swsaints.org

**Debbie Gregor**

*Director of Liturgical Music at SW*  
952-758-4207  
Debbie.Gregor@npcatholic.org

**Lisa Levenson**

*Parish Administrative Assistant*  
952-758-3225  
Lisa.Leverson@npcatholic.org

**PARISH BUSINESS OFFICE**

215 Main St E, New Prague, MN 56071  
PH 952-758-3225 FAX 952-758-2960

**FAITH FORMATION OFFICE**

On campus in Parish Activity Center

**ST. WENCESLAUS SCHOOL**

227 Main St E, New Prague, MN 56071  
PH 952-758-3133 FAX 952-758-2958

**LITTLE SPIRITS PRESCHOOL**

On campus of SWS ~ 1950's building  
952-758-0480

**MAINTENANCE DEPARTMENT**

952-758-2327

**MEETINGS & EVENTS CALENDAR**

WEEK OF JANUARY 15-21, 2018

**Monday, January 15:**

*No School*  
SW CCW Meeting, 8:30 am – Church Basement

**Tuesday, January 16:**

SWS Basketball Games – Gym  
Separated & Divorce Support Group, 6:45 pm  
– Deacon Bob's Office

**Wednesday, January 17:**

Early Morning Scripture Study, 7-8 am

– Parish Office Dining Room

Morning Scripture Study, 8 am

– Parish Office Dining Room

SWS Basketball Game – Gym

Disciples of Christ, 6:15-7:30 pm

– Campus Wide

**Thursday, January 18:**

Snowman Celebration, 6 pm

– Parish Activities Center

NPACC Book Club, 6:30 pm

– Parish Office Dining Room

Bereavement Support Group, 7 pm

– Parish Office, Deacon Bob's Office

**Friday, January 19:**

Adoration, 9 am-midnight – Daily Chapel

**Saturday, January 20:**

Adult Scripture Review, 8:30-10 am – Pius X Rm

1st Reconciliation Retreat, 9 am

– Parish Activities Center

**Sunday, January 21:**

Annual SWS KC Breakfast, 8 am-Noon – CB

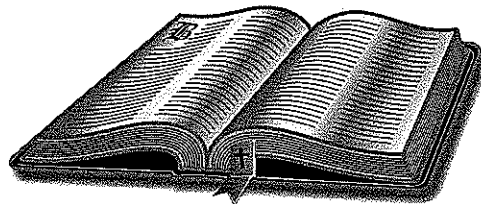
Children's Liturgy of the Word at 8:30 and

10:30 am Masses – SW Chapel

Confirmation, 8:45-11:30 am – Campus Wide

**SCRIPTURE READINGS**

WEEK OF JANUARY 15-21, 2018



**Monday, January 15:**

1 SM 15:16-23 / MK 2:18-22

**Tuesday, January 16:**

1 SM 16:1-13 / MK 2:23-28

**Wednesday, January 17:**

1 SM 17:32-33, 37, 40-51 / MK 3:1-6

**Thursday, January 18:**

1 SM 18:6-9; 19:1-7 / MK 3:7-12

**Friday, January 19:**

1 SM 24:3-21 / MK 3:13-19

**Saturday, January 20:**

2 SM 1:1-4, 11-12, 19, 23-27 / MK 3:20-21

**Sunday, January 21:**

JON 3:1-5, 10 / 1 COR 7:29-31 / MK 1:14-20

**CHURCH OF ST. WENCESLAUS  
CALENDAR CORNER**

Thank you to the Following Sponsors:

**Tupy Insurance Agency, Inc.,**

**Scheffler Electric Inc. &**

**Lakeside Supper Club**

Date:	Date:
Jan. 3, 2018	Jan. 10, 2018
Number:	Number:
0786	0065
Winner:	Winner:
Barb Hennes	Mark & Mary Bartusek



**Patty's Place**  
 • Specialty Coffees  
 • Fresh Pastries  
 • Hand Dipped Ice Cream  
 • Cake Decorating  
 108 E Main Street #1 New Prague  
 952-758-5808 Open 7 Days A Week

**NPCL**  
 (New Prague-Ceska-Louisville)  
**Mutual Insurance Company**  
 205 County Road 37  
 New Prague, MN 56071  
**952-758-5964**  
 www.npclinsurance.com  
 Competitive Rates for Farm & Home  
**Since 1882**

**SKLUZACEK**  
 Cabinetry & Woodworking  
 Dave Skluzacek • 612-986-8443  
 New Prague, MN

**First Bank & Trust**  
 1101 1st Street SE, New Prague • 952-758-4491  
 BANKeasy.com MEMBER FDIC

**NEW PRAGUE FAMILY & SPORTS CHIROPRACTIC CENTER**  
 Dr. Mike Kilpatrick  
 952-758-4121

**STS Mechanical Inc.**  
 Scott & Jenny Smisek  
 952-758-2956  
 scott@sjsmechanicalinc.com

**COMMITMENT TO GETTING RESULTS.**  
**Wornson Goggins**  
 119 E. MAIN ST. NEW PRAGUE  
 952-758-4161  
 www.LAWYERSNP.COM

**BACK and NECK CLINIC of NEW PRAGUE**  
 Dr. Laurie A. Reiner Hughes  
 Dr. Jeremy Tupy  
 DOCTORS OF CHIROPRACTIC  
 Located across from The New Prague Times  
 201 East Main Street 952-758-5135

**Edina Realty**  
 Pat Sullivan REALTOR  
 952.457.0479  
 patsullivan@edinarealty.com  
 www.edinarealty.com/pat-sullivan-realtor

**Bruzek FUNERAL HOME**  
 Serving With Compassion Since 1903  
 Steve and Mary Frost  
 Cremation & Funeral Planning  
 952-758-4949

**MAIN ST DENTAL**  
 Family Dentistry & Orthodontics  
 Jon P. Colling, D.D.S. GENERAL DENTISTRY & ORTHODONTICS  
 Thomas W. Smyth, D.D.S.  
 newpraguedentist.com  
 OFFICE HOURS MON-FRI  
 NEW LOCATION!  
 211 Cty. Rd. 37 New Prague 952-758-2376

**BENDZICK MINI STORAGE**  
 Brand New Storage Facility  
 Excellent Secure Location 1 Mile North of New Prague on Hwy. 21  
**507-334-3422**

**MARQUARDT JEWELERS**  
 New Prague

**Kneip & Associates INSURANCE**  
 medical dental life  
 Daniel Kneip 952-758-3049  
 kneip.ins@gmail.com  
 Committed to product understanding and personal service.

**Parkview Medical Clinic**  
 John H. Berg Jr., MD  
 Daniel R. Berg, MD  
 Michael P. O'Rourke, MD  
 Jean Craig, MD  
 Heather Hamernick, MD  
 New Patients Welcome  
 Same Day Appointments Available  
 Saturday Morning Appointments  
 www.parkviewclinic.com  
**952-758-2535**

**NEW PRAGUE AUTO REPAIR**  
 www.NewPragueAutoRepair.com  
 Since 1974 Gary Kohoutek, Owner  
 952-758-4471  
 205 4th Ave. SW  
 New Prague, MN 56071

**New Prague "Gentle Dental Care"**  
 Dr. Gregory R. Dvorak, D.D.S.  
 Cosmetic & Sedation Dentistry  
 136 West Main Street, New Prague  
 952-758-3003 • www.drdivorak.com

**STEFENI TUPY REALTOR\***  
 952-486-3082  
 www.StefTupy.com  
 Edina Realty.  
 StefeniTupy@EdinaRealty.com

**NEW PRAGUE MINI STORAGE, INC.**  
 From 5x10 thru 10x40. Climate Controlled. Now Available.  
 Easy access, 7 days a week, 24 hours a day  
 www.NewPragueMiniStorage.com  
**952-758-7819**

**Ambroz Plumbing, Inc.**  
 Paul Ambroz  
 New Construction - Remodel - Service  
 952-758-6265 • Cell 952-292-4413  
 Lic# 059407-PM

**TUPY INSURANCE AGENCY, INC.**  
 For Your Personal or Business Insurance Needs  
 We are here to Serve You!  
 111 East Main Street  
 New Prague, MN  
**952-758-2433**

**STRIKE FORCE BOWL and ProShop**  
 309 W. Main St., New Prague, MN 952-758-5170

**Marlene Mushitz, CRS, GRI, CDPE**  
 1301 1st St. NE  
 New Prague  
**612-978-2222**  
 www.DynamicMarlene.com

**Matt Saxe Chevrolet Buick**  
 909 Enterprise Drive  
 Belle Plaine, MN 56011  
**952-873-2234**  
 www.saxechevy.com

**Paul Kratochvil, Owner**  
**MACH LUMBER**  
 Convenient - We Deliver!  
 952-758-3235  
 M-F 7-5; Sat. 9-Noon  
 201 Second Ave. SW, New Prague  
 1 block S of Main St, across from ConAgra

**KUBES Custom Cabinets**  
 Wencel Kubes  
 New Prague  
 952-758-2262

**YOU CALL... WE HAUL...**  
 Complete Household Transfer  
 Licensed • Bonded  
 Reasonable Rates  
 TIM or JOHN  
 952-758-2552  
 16264 310 St. New Prague

**NEW PRAGUE VETERINARY CLINIC**  
 Dr. William F. Vollmar  
 Dr. Katie Vollmar  
 Boarding Services  
 1003 East Main St.  
 New Prague, MN  
 952-758-2881

**AMERICAN FAMILY INSURANCE**  
 Melissa Kreuser, Agent  
 American Family Mutual Insurance Company and the Subsidiaries  
 American Family Insurance Company  
 Home Office - Madison, WI 53783  
 ©2012 006441-9/12  
 (952) 758-5460  
 1301 1st St. NE  
 New Prague  
 mkreuser@amfam.com

**Odenthal Landscaping**  
 Retaining Walls, Patios & Much More  
 For All Your Landscaping Needs  
 www.odenthallandscaping.com  
 Phone & Fax: 507-364-5460 Cell: 612-703-4803

**KUBES REALTY**  
 115 1st Ave. SE  
 New Prague  
**952.758.9110**  
 www.KubesRealty.com

**Suel Printing Company**  
 Pleased to be the printers of your Parish Bulletin.  
 200 Main St. East, New Prague  
 952-758-4435  
 awann@suelprinting.com

**SKLUZACEK CONSTRUCTION, INC.**  
 Steve Skluzacek,  
 Owner #0004897  
**952-758-4158**

**Wacker Drywall, Inc.**  
 Hand Troweled Ceilings  
 Roger Wacker  
 Home: 952-758-8726  
 Cell: 612-978-9648  
 New Prague

**DOUG VAYDA**  
 Specialist in the practice of Orthodontics  
 101 Central Ave.  
 New Prague  
 952-758-6999

**MALA STRANA REHABILITATION CENTER & Assisted Living**  
 New Prague • 952-758-2511

**Place Your Ad Here!**  
**952-758-4435**

**SKLUZACEK CONSTRUCTION, INC.**  
 Steve Skluzacek,  
 Owner #0004897  
**952-758-4158**

**New Prague Dental Center**  
 "Dental care for the entire family"  
 Jeremy Darksen, D.D.S.  
 Kathleen J. Garry, D.D.S.  
 101 Lexington Ave. So.  
**952-758-4741**

Positively Impacting Peoples' Lives Since 1881  
**Roundbank**  
 New Prague: 952-758-BANK (2265) • Farmington: 651-463-8300  
 www.roundbank.com

**Place Your Ad Here!**  
**952-758-4435**

Quality appliances and service you can trust from your hometown appliance source  
**40th Anniversary 1977-2017**  
**MAYTAG Whirlpool KitchenAid**  
 (952) 445-2916  
 Or online at MyApplianceSource.com  
 On Hwy 169 in Shakopee  
 We may be smaller...but we try harder  
**MY APPLIANCE SOURCE SALES • SERVICE**

**UHELECTRIC KEVIN GIESEN**  
 License # EAG7410  
 Cell: 612-328-7206  
 uhelectric@gmail.com  
 27946 Church Avenue, New Prague

**Michael P. Traxler Financial Advisor**  
 WEALTH MANAGEMENT, LLC  
 Investments & Financial Planning Solutions  
 Security & Advisory Services offered through Nations Financial Group, Inc.  
 Member FINRA & SIPC. A Registered Investment Advisor.  
 222 Main Street East  
 New Prague, MN 56071  
**952-758-8060**