

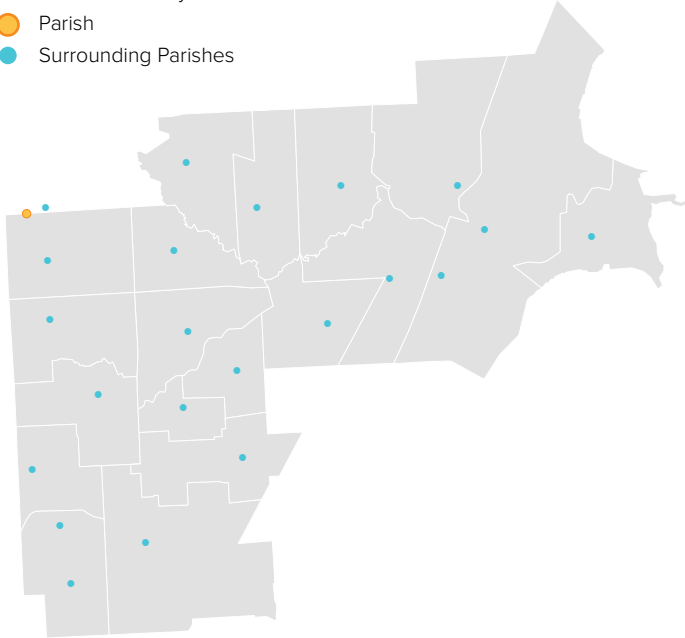
# OUR LADY OF CZESTOCHOWA

STERLING HEIGHTS, MI / CENTRAL MACOMB VICARIATE / NORTHEAST REGION

## Parish Profile and Survey Results

### KEY

- Parish Boundary
- Parish
- Surrounding Parishes



### TOTAL SURVEY RESPONSES

Parish ID	Name	responses
625	Our Lady of Czestochowa	117

### PARISH LOCATION AND BOUNDARY - WITHIN VICARIATE

#### PARISH CATHOLIC POPULATION FACTS

	2000	2013	% Change
Total Registered Households	784	1,638	108.9%
Total Registered Individuals	2,352	4,586	95.0%
% of HH in Parish Boundary		0%	
% of HH Outside Parish Boundary		100%	

#### KEY U.S. CENSUS FACTS

	2000	2010	% Change
Total Households	#N/A	#N/A	#N/A
Total Population	#N/A	#N/A	#N/A
Median Household Income	#N/A	#N/A	#N/A
Median Age	#N/A	#N/A	#N/A

#### PARISH FINANCIAL STATS

	2009	2013	% Change
Total Operating Income	\$451,358	\$519,849	15.2%
Total Operating Expenses	\$441,606	\$613,916	39.0%
LDP Debt	\$-	\$-	0.0%
AOD & MCC	N/A	\$363,986	N/A
Outstanding payables			
Total Savings	\$59	\$-	-100.0%

#### PARISH SACRAMENTAL STATS (5 YR. TREND)

	2009	2013	% Change
Baptisms	45	40	-11.1%
First Communions	47	38	-19.1%
Confirmations	46	50	8.7%
Total Marriages	10	9	-10.0%
Funerals	30	42	40.0%

# OUR LADY OF CZESTOCHOWA

STERLING HEIGHTS, MI / CENTRAL MACOMB VICARIATE / NORTHEAST REGION

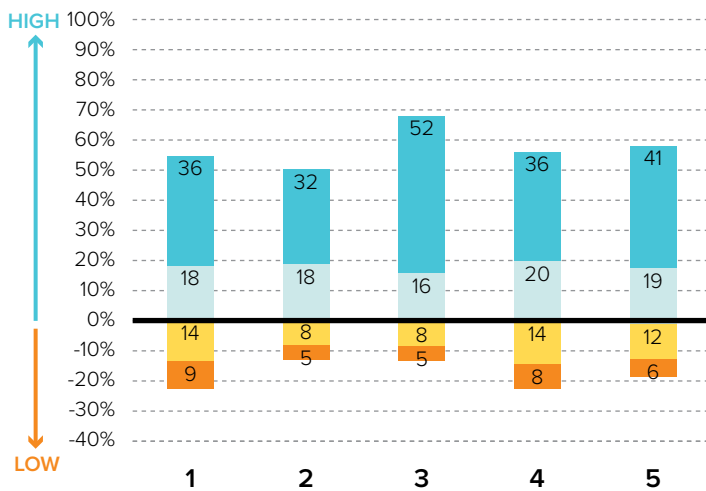
**KEY**  
■ % Excellent  
■ % Good  
■ % Fair  
■ % Poor

## Survey Results Part I: Mission Priorities

The following graphs show how parishioners rated each of the objectives associated with a mission priority area. The graphs are split between positive values for high ratings (“good” or “excellent”) and negative values for lower ratings (“fair” or “poor”). “Don’t know” responses are not shown in the graphs at right to more easily show the split between high and low ratings.

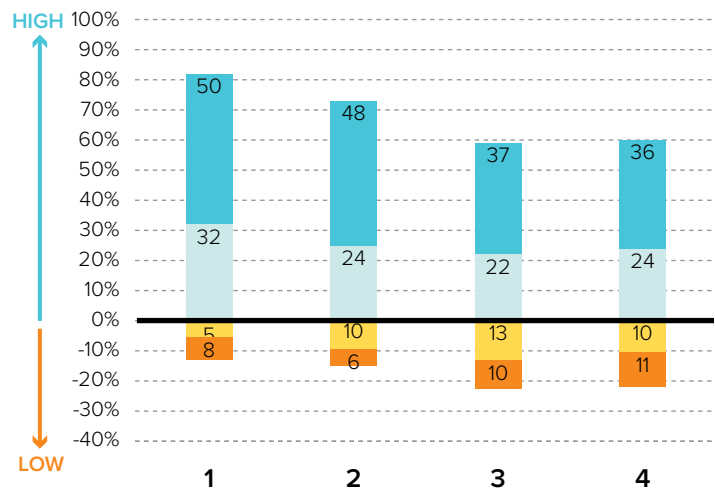
To the best of your ability, please evaluate how well your parish is doing in each of these areas.

### PRIORITY AREA: CATHOLIC SCHOOLS



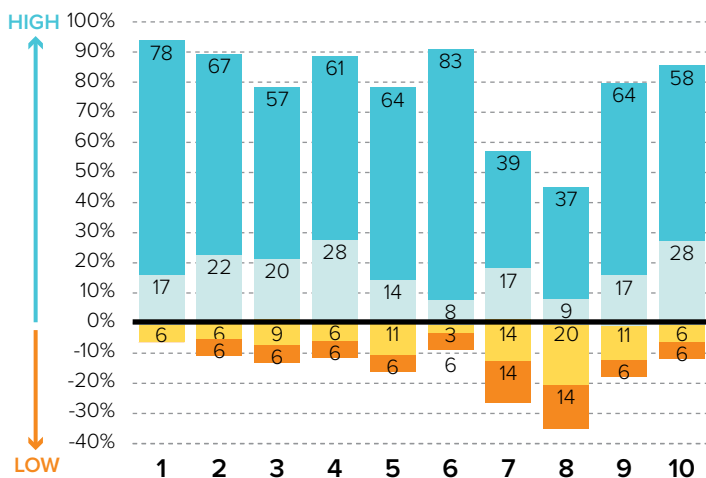
- 1 Ensuring a Catholic education is financially viable
- 2 Keeping tuition affordable to all Catholics
- 3 Maintaining a Catholic identity
- 4 Using technology effectively
- 5 Ensuring academic success and Catholic formation

### PRIORITY AREA: CHRISTIAN SERVICE AND OUTREACH



- 1 Christian service projects for the parish community
- 2 Christian service projects for youth and young adults
- 3 Building interfaith relationships
- 4 Collaborating with other community organizations

### EVANGELIZATION AND CATECHESIS



- 1 Explicitly proclaiming the Gospel of Jesus Christ
- 2 Evangelization leadership (committee, minister, etc.)
- 3 Offering ministries to evangelize adults
- 4 Offering ministries for spiritual growth
- 5 Offering programs aimed at parish renewal
- 6 Prayers for healing and spiritual reconciliation
- 7 Reaching out to inactive Catholics
- 8 Reaching out to non-Catholics
- 9 Providing adult faith formation and catechesis
- 10 Strengthening religious education

# OUR LADY OF CZESTOCHOWA

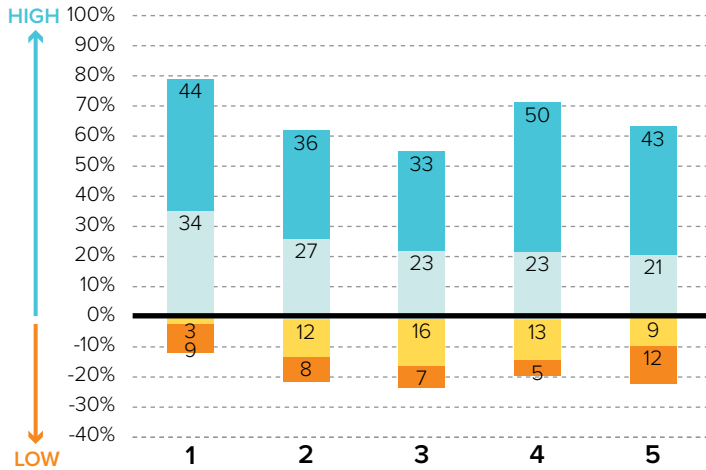
STERLING HEIGHTS, MI / CENTRAL MACOMB VICARIATE / NORTHEAST REGION

## KEY

- % Excellent
- % Good
- % Fair
- % Poor

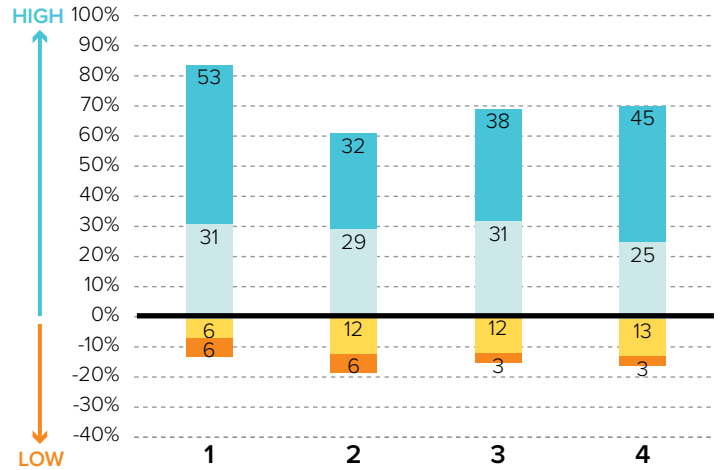
## Survey Results Part I: Mission Priorities

### PRIORITY AREA: LAY LEADERSHIP



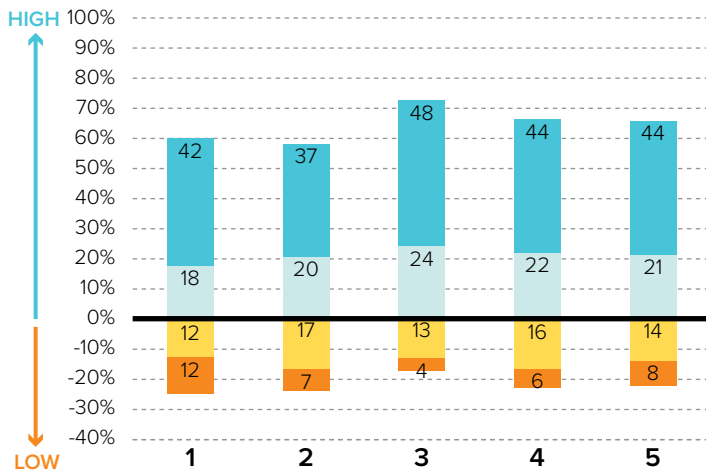
- 1 Training parishioners to identify their spiritual gifts
- 2 Increasing opportunities for lay involvement
- 3 Training and ministry for lay leaders
- 4 Encouraging parishioners to volunteer
- 5 Providing training opportunities for volunteers

### PRIORITY AREA: STEWARDSHIP AND ADMINISTRATION



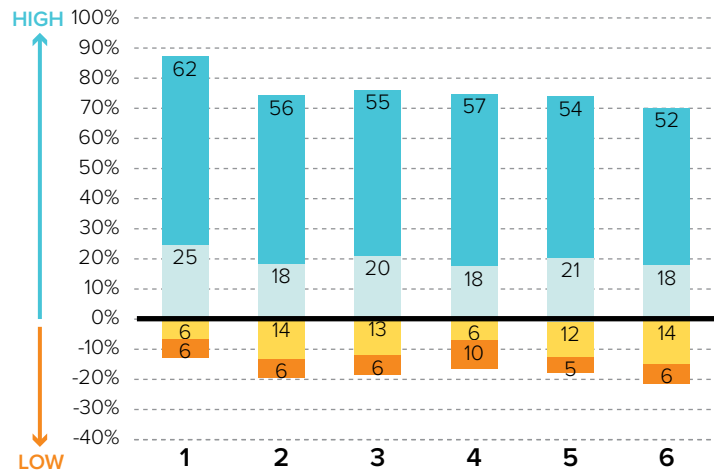
- 1 Communicating stewardship as a way of life
- 2 Forming an active Stewardship Commission
- 3 Supporting an active Finance Council
- 4 Financial transparency/accountability

### PRIORITY AREA: VOCATIONS



- 1 Forming a vocations committee
- 2 Promoting vocations to priesthood/religious life
- 3 Promoting prayer for vocations
- 4 Inviting young people to consider Church vocations
- 5 Teaching vocation awareness

### PRIORITY AREA: YOUTH AND YOUNG ADULTS



- 1 Providing regular meetings for teens
- 2 Providing special events for teens (e.g. retreats)
- 3 Engaging youth in parish life and liturgies
- 4 Providing regular meetings for young adults
- 5 Hosting special events for young adults
- 6 Engaging young adults in parish ministries and outreaches

# OUR LADY OF CZESTOCHOWA

STERLING HEIGHTS, MI / CENTRAL MACOMB VICARIATE / NORTHEAST REGION

## Survey Results Part II: Faith and Parish Life

### YEARS AT CURRENT PARISH

How many years have you attended Mass at your current parish?

	Count	%
Less than 1 year	0	0.0%
1-5 years	1	3.0%
6-10 years	2	6.1%
11-20 years	15	45.5%
21-30 years	12	36.4%
31+ years	3	9.1%
Total	33	100.0%

### MASS ATTENDANCE

How often do you attend Mass?



### REASONS TO MISS MASS

If you do not attend Mass regularly on Sundays, how much does each of the following explain why? % "somewhat" or "very"

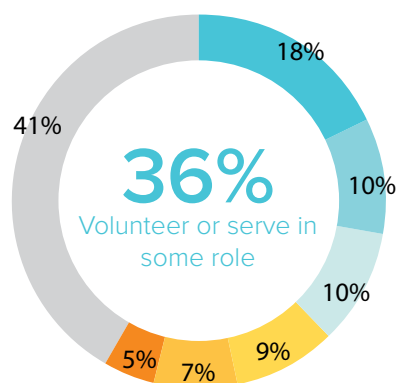
Demands of work, school, or sports	22.2%
Health problems or a disability	22.2%
Family concerns and needs	21.2%
The pastor is not welcoming	11.8%
Lack of children's ministries	8.0%
The parish is not welcoming	7.8%
Clusters, mergers, and closures of parishes	6.1%
Masses are boring/irrelevant to me	5.9%
Divorce or marriage outside of Church	4.0%

### REGISTRATION

Are you a registered member at your current parish?



### INVOLVEMENT IN THE PARISH



Do you serve, or have you ever served in any of the following roles in your parish?

#### KEY

- Volunteer (e.g. catechist, Vacation Bible School)
- Music ministries (e.g. choir, musician, director)
- Member of a parish council, commission, or committee
- Liturgical ministries (e.g. usher, Eucharistic Minister, lector)
- Parish support staff (e.g. secretary, maintenance)
- Parish staff (e.g. youth minister, business manager, DRE)
- None of the above

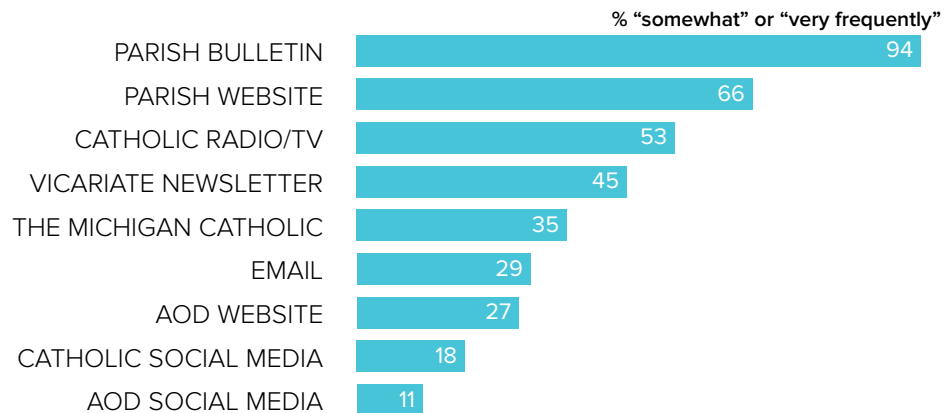
# OUR LADY OF CZESTOCHOWA

STERLING HEIGHTS, MI / CENTRAL MACOMB VICARIATE / NORTHEAST REGION

## Survey Results Part II: Faith and Parish Life

### COMMUNICATION METHODS

How often do you rely on the following for information about your parish, the Archdiocese, or the Catholic Church?



### PARISH CHARACTERISTICS

How important to you are these characteristics in a parish?

	% "very important"		% "very important"
Quality worship service	90.6%	Catholic school	53.1%
Daily and weekend Mass schedules	83.9%	Parish social groups/gatherings	51.5%
Parish embraces Church teachings and values	79.8%	Service activities	47.4%
Opportunities for penance/confession	75.8%	Small group ministries (e.g. Bible Study)	40.2%
Mass in language(s) other than English	73.3%	Contemporary music	26.5%
Devotions (rosary, adoration, etc.)	65.7%		
Traditional music	61.9%		
Children's ministries (for all age groups)	61.6%		

### PASTOR CHARACTERISTICS

How important to you are these characteristics in a pastor?

	% "very important"
Ability to connect scripture to the present	76.8%
Invites people into a personal relationship w/ Jesus	75.8%
Welcoming spirit	75.0%
Engaging preaching style	68.4%
Communicates parish priorities	68.4%
Manages parish resources effectively	66.7%
Challenges people to live a life of discipleship	64.0%
Values input from laity	59.4%

### CHALLENGES FACING THE CHURCH

How would you rate the following as challenges facing the Catholic Church in Southeast Michigan today?

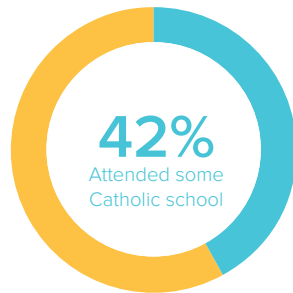
	% "serious challenge"
<b>TOP 5 RESPONSES</b>	
Shortage of priests/decline in vocations	74.2%
Disconnect between Church teachings and popular culture	62.5%
Society in general is less religious	60.8%
Engaging teens and young adults in parish life	57.7%
Clustering, merging, and closing of parishes	57.3%

# OUR LADY OF CZESTOCHOWA

STERLING HEIGHTS, MI / CENTRAL MACOMB VICARIATE / NORTHEAST REGION

## Survey Results Part III: Demographics

### CATHOLIC BACKGROUND AND EDUCATION



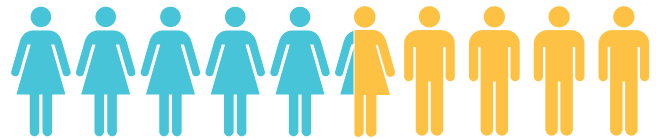
**KEY**

- Raised Catholic
- Converted to Catholicism
- Not Catholic

**KEY**

- Attended Catholic school
- Did not attend Catholic school

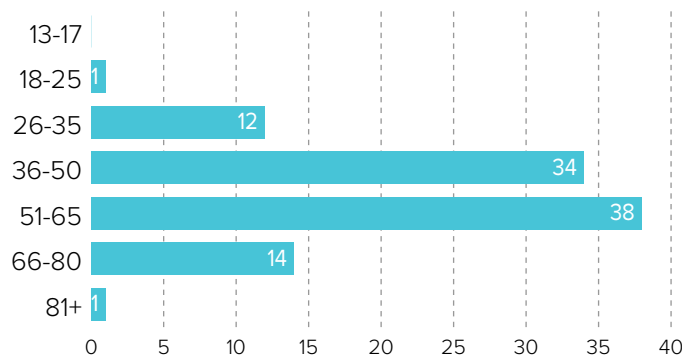
### GENDER



53% WOMEN

47% MEN

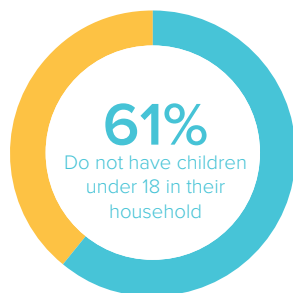
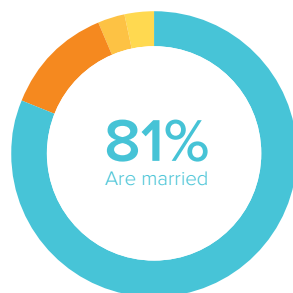
### AGE



### RACIAL OR ETHNIC BACKGROUND

	Count	%
White	98	98.0%
Black	0	0.0%
Hispanic	0	0.0%
Asian	1	1.0%
Native American	0	0.0%
Other	1	1.0%
<b>Total</b>	<b>100</b>	<b>100.0%</b>

### MARITAL STATUS AND CHILDREN IN HOUSEHOLD



**KEY**

- Married or remarried
- Single, never married
- Divorced or separated
- Widowed

**KEY**

- Do not have children
- Have children

### ESTIMATED HOUSEHOLD INCOME

	Count	%
\$19,000 or less	5	5.4%
\$20,000-39,999	16	17.4%
\$40,000-59,999	21	22.8%
\$60,000-79,999	18	19.6%
\$80,000-99,999	13	14.1%
\$100,000 +	19	20.7%
<b>Total</b>	<b>92</b>	<b>100.0%</b>