

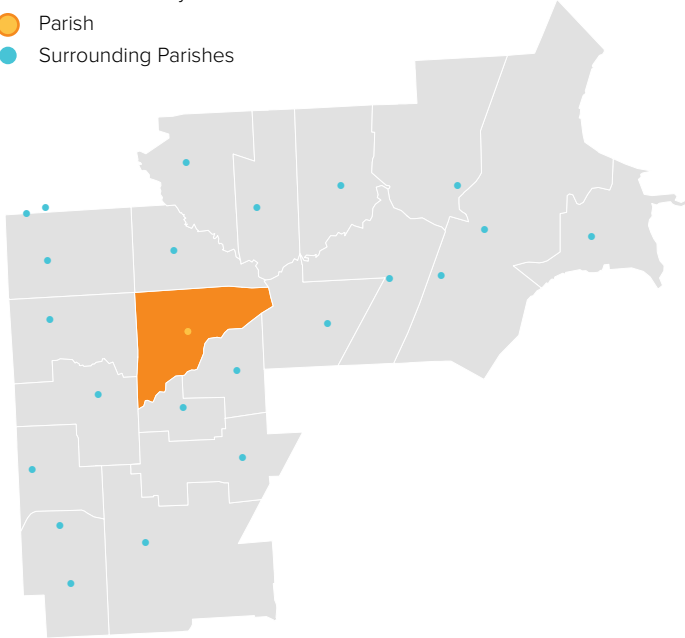
ST. BLASE

STERLING HEIGHTS, MI / CENTRAL MACOMB VICARIATE / NORTHEAST REGION

Parish Profile and Survey Results

KEY

- Parish Boundary
- Parish
- Surrounding Parishes



TOTAL SURVEY RESPONSES

Parish ID	Name	responses
206	St. Blase	335

PARISH LOCATION AND BOUNDARY - WITHIN VICARIATE

PARISH CATHOLIC POPULATION FACTS

	2000	2013	% Change
Total Registered Households	2,916	1,762	-39.6%
Total Registered Individuals	8,748	4,934	-43.6%
% of HH in Parish Boundary		57%	
% of HH Outside Parish Boundary		43%	

KEY U.S. CENSUS FACTS

	2000	2010	% Change
Total Households	7,131	6,652	-6.7%
Total Population	18,242	17,811	-2.4%
Median Household Income	\$60,531	\$58,355	-3.6%
Median Age	41.6	37.5	-9.9%

PARISH FINANCIAL STATS

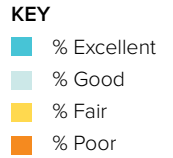
	2009	2013	% Change
Total Operating Income	\$1,311,585	\$1,299,602	-0.9%
Total Operating Expenses	\$939,053	\$979,047	4.3%
LDP Debt	\$-	\$-	N/A
AOD & MCC	N/A	\$11,086	N/A
Outstanding payables			
Total Savings	\$736,091	\$1,949,930	164.9%

PARISH SACRAMENTAL STATS (5 YR. TREND)

	2009	2013	% Change
Baptisms	43	30	-30.2%
First Communion	49	26	-46.9%
Confirmations	50	37	-26.0%
Total Marriages	24	6	-75.0%
Funerals	112	90	-19.6%

ST. BLASE

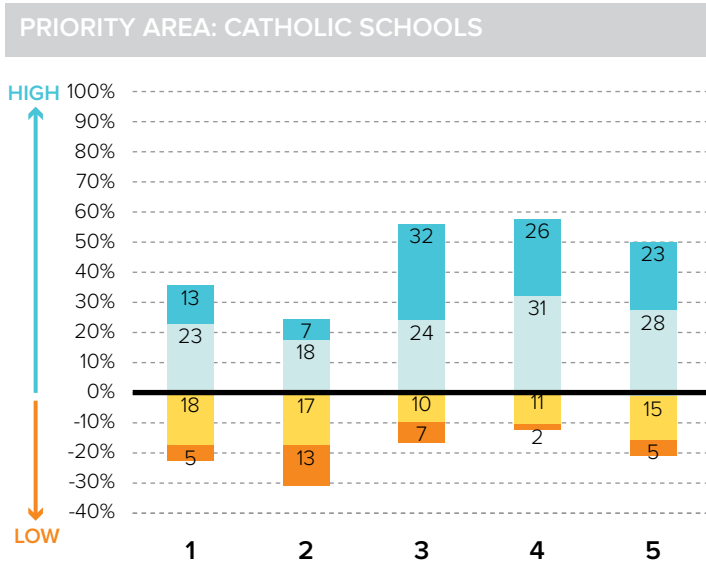
STERLING HEIGHTS, MI / CENTRAL MACOMB VICARIATE / NORTHEAST REGION



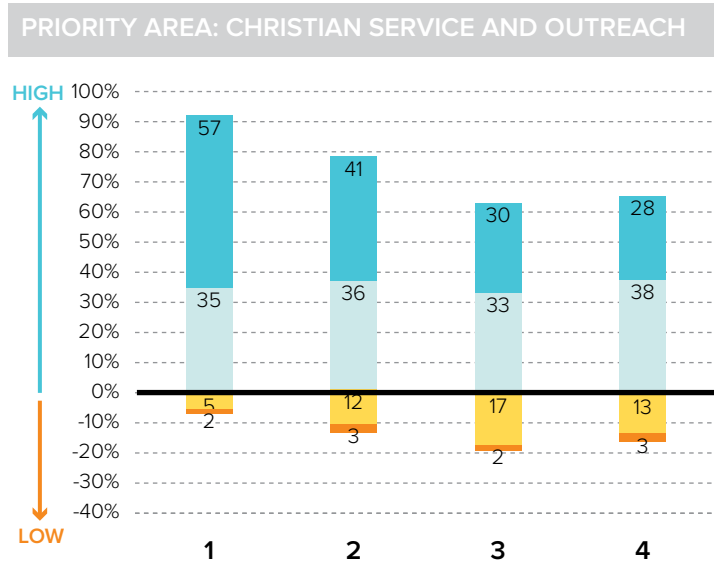
Survey Results Part I: Mission Priorities

The following graphs show how parishioners rated each of the objectives associated with a mission priority area. The graphs are split between positive values for high ratings (“good” or “excellent”) and negative values for lower ratings (“fair” or “poor”). “Don’t know” responses are not shown in the graphs at right to more easily show the split between high and low ratings.

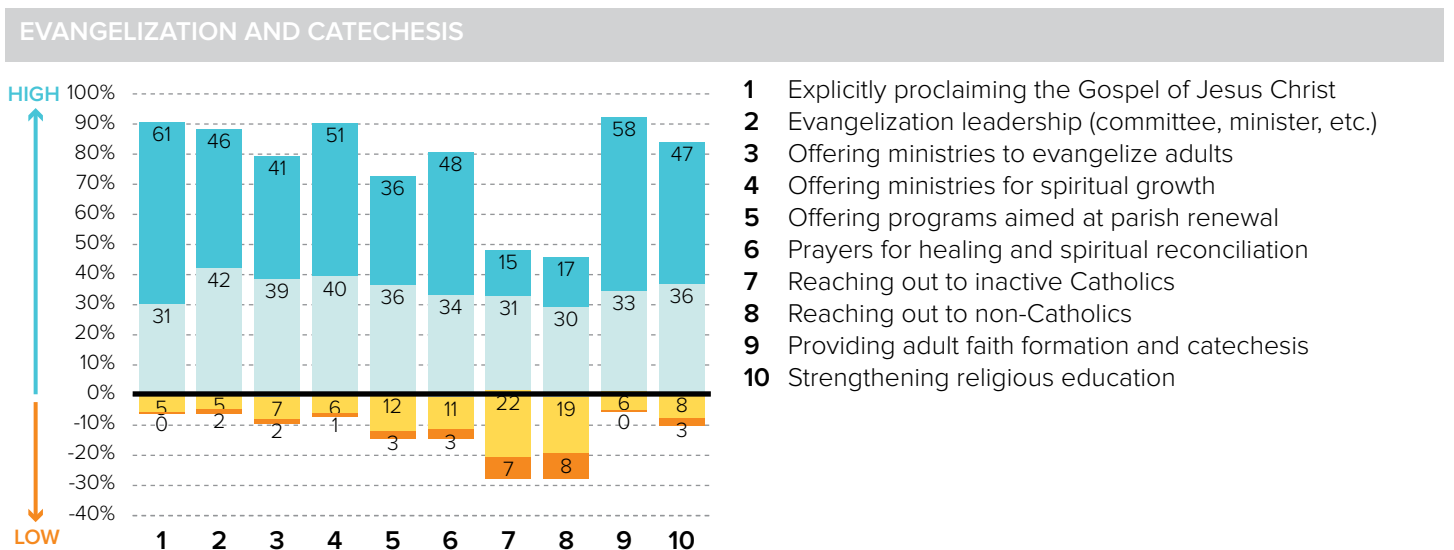
To the best of your ability, please evaluate how well your parish is doing in each of these areas.



- 1 Ensuring a Catholic education is financially viable
- 2 Keeping tuition affordable to all Catholics
- 3 Maintaining a Catholic identity
- 4 Using technology effectively
- 5 Ensuring academic success and Catholic formation



- 1 Christian service projects for the parish community
- 2 Christian service projects for youth and young adults
- 3 Building interfaith relationships
- 4 Collaborating with other community organizations



- 1 Explicitly proclaiming the Gospel of Jesus Christ
- 2 Evangelization leadership (committee, minister, etc.)
- 3 Offering ministries to evangelize adults
- 4 Offering ministries for spiritual growth
- 5 Offering programs aimed at parish renewal
- 6 Prayers for healing and spiritual reconciliation
- 7 Reaching out to inactive Catholics
- 8 Reaching out to non-Catholics
- 9 Providing adult faith formation and catechesis
- 10 Strengthening religious education

ST. BLASE

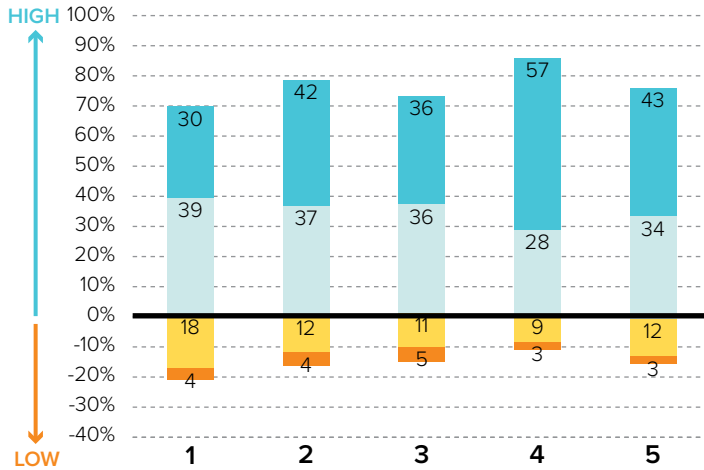
STERLING HEIGHTS, MI / CENTRAL MACOMB VICARIATE / NORTHEAST REGION

KEY

- % Excellent
- % Good
- % Fair
- % Poor

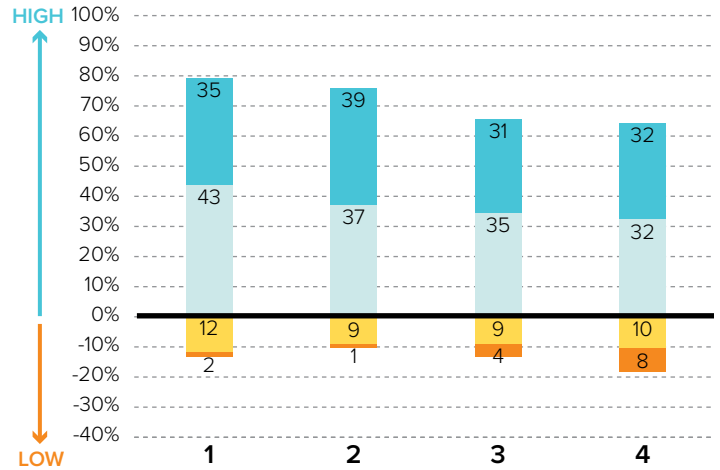
Survey Results Part I: Mission Priorities

PRIORITY AREA: LAY LEADERSHIP



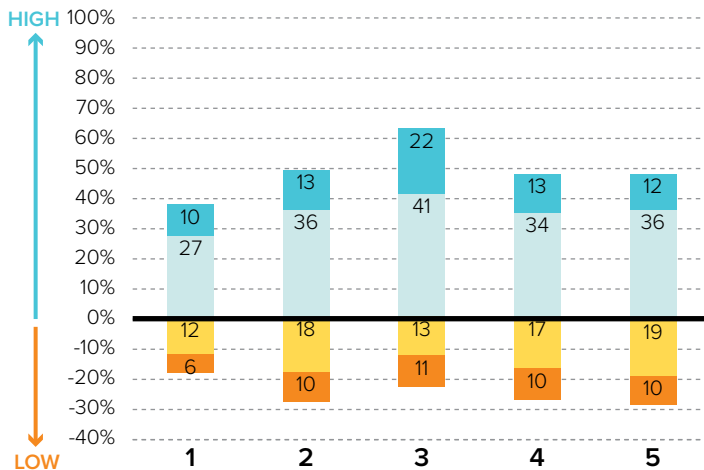
- 1 Training parishioners to identify their spiritual gifts
- 2 Increasing opportunities for lay involvement
- 3 Training and ministry for lay leaders
- 4 Encouraging parishioners to volunteer
- 5 Providing training opportunities for volunteers

PRIORITY AREA: STEWARDSHIP AND ADMINISTRATION



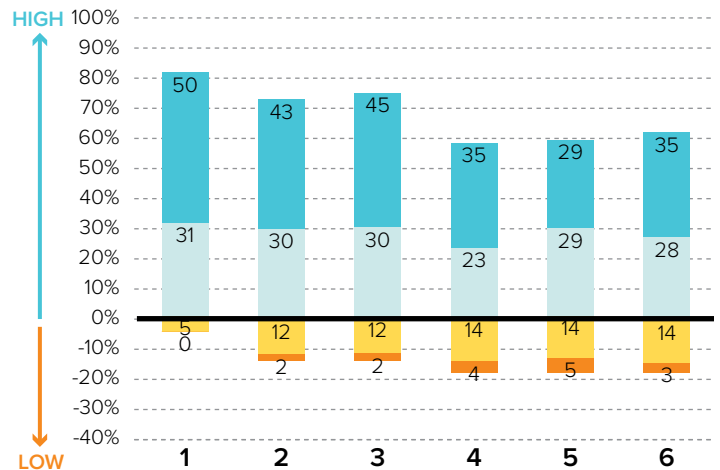
- 1 Communicating stewardship as a way of life
- 2 Forming an active Stewardship Commission
- 3 Supporting an active Finance Council
- 4 Financial transparency/accountability

PRIORITY AREA: VOCATIONS



- 1 Forming a vocations committee
- 2 Promoting vocations to priesthood/religious life
- 3 Promoting prayer for vocations
- 4 Inviting young people to consider Church vocations
- 5 Teaching vocation awareness

PRIORITY AREA: YOUTH AND YOUNG ADULTS



- 1 Providing regular meetings for teens
- 2 Providing special events for teens (e.g. retreats)
- 3 Engaging youth in parish life and liturgies
- 4 Providing regular meetings for young adults
- 5 Hosting special events for young adults
- 6 Engaging young adults in parish ministries and outreaches

ST. BLASE

STERLING HEIGHTS, MI / CENTRAL MACOMB VICARIATE / NORTHEAST REGION

Survey Results Part II: Faith and Parish Life

YEARS AT CURRENT PARISH

How many years have you attended Mass at your current parish?

	Count	%
Less than 1 year	3	1.6%
1-5 years	12	6.6%
6-10 years	26	14.3%
11-20 years	51	28.0%
21-30 years	40	22.0%
31+ years	50	27.5%
Total	182	100.0%

MASS ATTENDANCE

How often do you attend Mass?



REASONS TO MISS MASS

If you do not attend Mass regularly on Sundays, how much does each of the following explain why? % "somewhat" or "very"

Demands of work, school, or sports	33%
Family concerns and needs	21%
Health problems or a disability	19%
Masses are boring/irrelevant to me	9%
Lack of children's ministries	7%
The pastor is not welcoming	4%
The parish is not welcoming	4%
Divorce or marriage outside of Church	3%
Clusters, mergers, and closures of parishes	3%

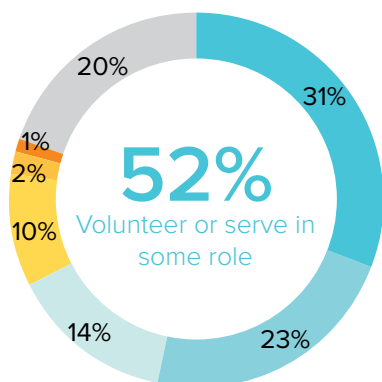
REGISTRATION

Are you a registered member at your current parish?



INVOLVEMENT IN THE PARISH

Do you serve, or have you ever served in any of the following roles in your parish?



KEY

- Volunteer (e.g. catechist, Vacation Bible School)
- Liturgical ministries (e.g. usher, Eucharistic Minister, lector)
- Member of a parish council, commission, or committee
- Music ministries (e.g. choir, musician, director)
- Parish support staff (e.g. secretary, maintenance)
- Parish staff (e.g. youth minister, business manager, DRE)
- None of the above

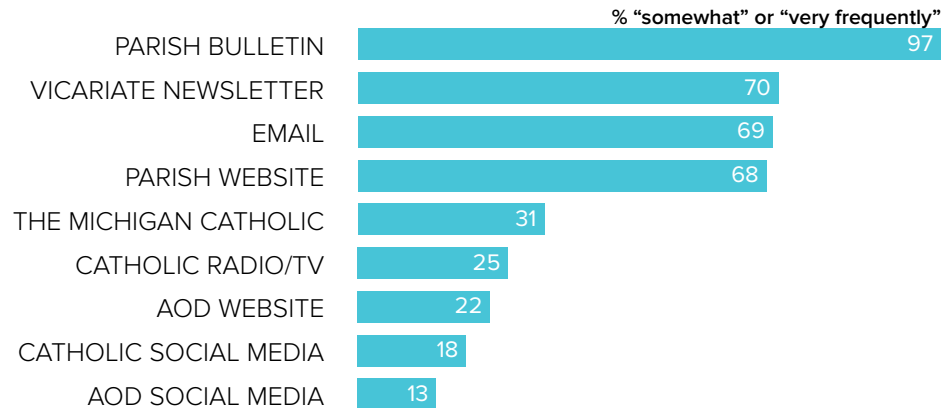
ST. BLASE

STERLING HEIGHTS, MI / CENTRAL MACOMB VICARIATE / NORTHEAST REGION

Survey Results Part II: Faith and Parish Life

COMMUNICATION METHODS

How often do you rely on the following for information about your parish, the Archdiocese, or the Catholic Church?



PARISH CHARACTERISTICS

How important to you are these characteristics in a parish?

	% "very important"		% "very important"
Quality worship service	93.8%	Opportunities for penance/confession	31.8%
Parish embraces Church teachings and values	79.3%	Small group ministries (e.g. Bible Study)	29.8%
Daily and weekend Mass schedules	68.0%	Devotions (rosary, adoration, etc.)	28.9%
Children's ministries (for all age groups)	55.1%	Catholic school	22.1%
Contemporary music	44.9%	Mass in language(s) other than English	5.2%
Service activities	44.3%		
Traditional music	43.0%		
Parish social groups/gatherings	38.0%		

PASTOR CHARACTERISTICS

How important to you are these characteristics in a pastor?

	% "very important"
Welcoming spirit	91.7%
Ability to connect scripture to the present	88.1%
Engaging preaching style	85.8%
Manages parish resources effectively	83.8%
Values input from laity	77.4%
Invites people into a personal relationship w/ Jesus	75.9%
Communicates parish priorities	73.1%
Challenges people to live a life of discipleship	68.2%

CHALLENGES FACING THE CHURCH

How would you rate the following as challenges facing the Catholic Church in Southeast Michigan today?

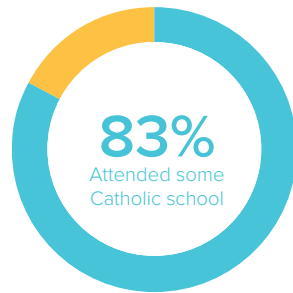
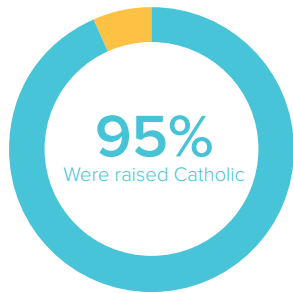
	% "serious challenge"
TOP 5 RESPONSES	
Shortage of priests/decline in vocations	84.9%
Engaging teens and young adults in parish life	60.5%
Society in general is less religious	58.0%
Church funds/financial management	56.0%
Priest sexual abuse	55.8%

ST. BLASE

STERLING HEIGHTS, MI / CENTRAL MACOMB VICARIATE / NORTHEAST REGION

Survey Results Part III: Demographics

CATHOLIC BACKGROUND AND EDUCATION



KEY

- Raised Catholic
- Converted to Catholicism
- Not Catholic

KEY

- Attended Catholic school
- Did not attend Catholic school

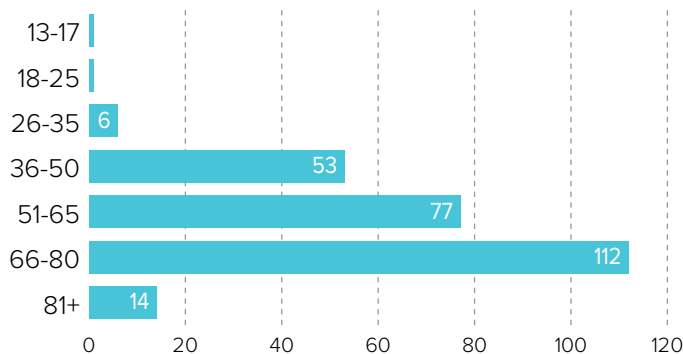
GENDER



69% WOMEN

31% MEN

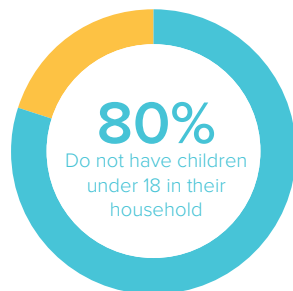
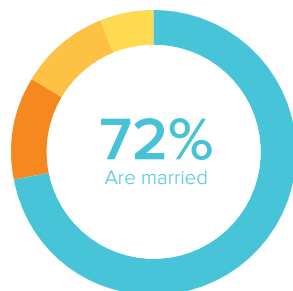
AGE



RACIAL OR ETHNIC BACKGROUND

	Count	%
White	253	97.3%
Black	1	.4%
Hispanic	2	.8%
Asian	2	.8%
Native American	0	0.0%
Other	2	.8%
Total	260	100.0%

MARITAL STATUS AND CHILDREN IN HOUSEHOLD



KEY

- Married or remarried
- Single, never married
- Widowed
- Divorced or separated

KEY

- Do not have children
- Have children

ESTIMATED HOUSEHOLD INCOME

	Count	%
\$19,000 or less	11	5.3%
\$20,000-39,999	39	18.8%
\$40,000-59,999	50	24.2%
\$60,000-79,999	41	19.8%
\$80,000-99,999	23	11.1%
\$100,000 +	43	20.8%
Total	207	100.0%