

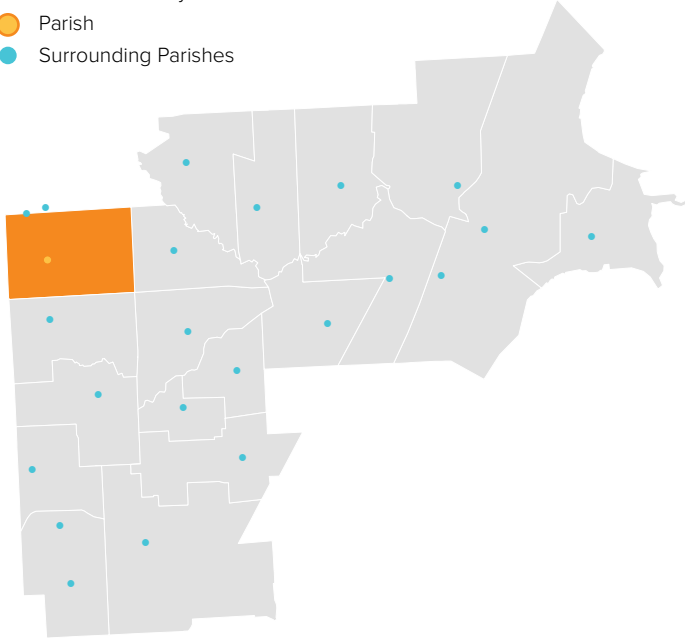
ST. JANE FRANCES DE CHANTAL

STERLING HEIGHTS, MI / CENTRAL MACOMB VICARIATE / NORTHEAST REGION

Parish Profile and Survey Results

KEY

- Parish Boundary
- Parish
- Surrounding Parishes



TOTAL SURVEY RESPONSES

Parish ID	Name	responses
421	St. Jane Frances	211

PARISH LOCATION AND BOUNDARY - WITHIN VICARIATE

PARISH CATHOLIC POPULATION FACTS

	2000	2013	% Change
Total Registered Households	1,670	2,731	63.5%
Total Registered Individuals	5,010	7,647	52.6%
% of HH in Parish Boundary		45%	
% of HH Outside Parish Boundary		55%	

KEY U.S. CENSUS FACTS

	2000	2010	% Change
Total Households	7,053	7,012	-0.6%
Total Population	21,650	21,525	-0.6%
Median Household Income	\$59,283	\$59,588	0.5%
Median Age	35.4	28.1	-20.9%

PARISH FINANCIAL STATS

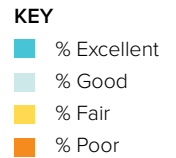
	2009	2013	% Change
Total Operating Income	\$911,145	\$885,205	-2.8%
Total Operating Expenses	\$638,254	\$668,588	4.8%
LDP Debt	\$565,949	\$-	-100.0%
AOD & MCC	N/A	\$-	N/A
Outstanding payables			
Total Savings	\$223,865	\$403,743	80.4%

PARISH SACRAMENTAL STATS (5 YR. TREND)

	2009	2013	% Change
Baptisms	41	21	-48.8%
First Communion	33	16	-51.5%
Confirmations	33	35	6.1%
Total Marriages	15	20	33.3%
Funerals	32	71	121.9%

ST. JANE FRANCES DE CHANTAL

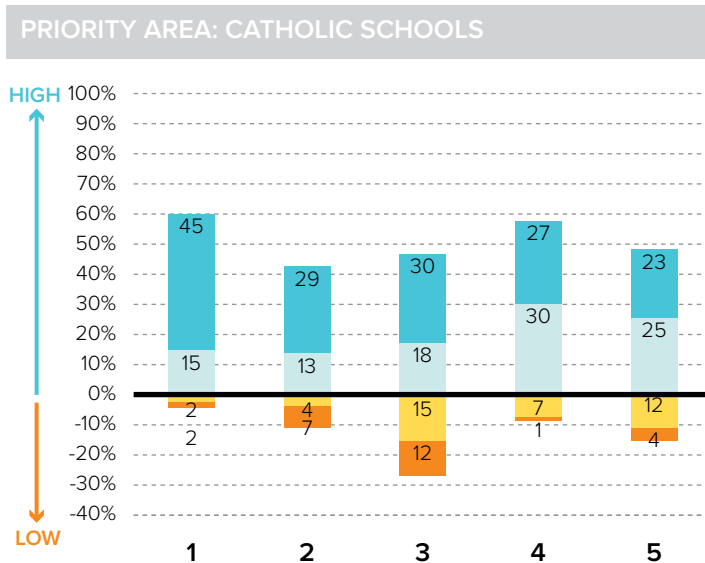
STERLING HEIGHTS, MI / CENTRAL MACOMB VICARIATE / NORTHEAST REGION



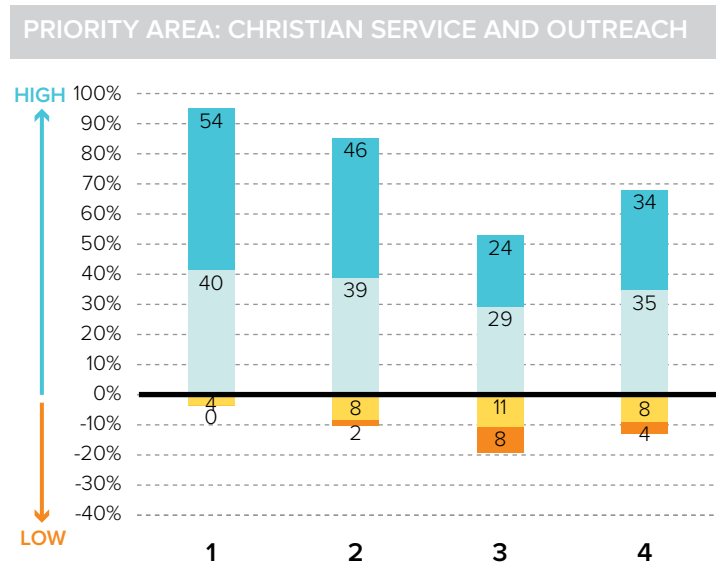
Survey Results Part I: Mission Priorities

The following graphs show how parishioners rated each of the objectives associated with a mission priority area. The graphs are split between positive values for high ratings (“good” or “excellent”) and negative values for lower ratings (“fair” or “poor”). “Don’t know” responses are not shown in the graphs at right to more easily show the split between high and low ratings.

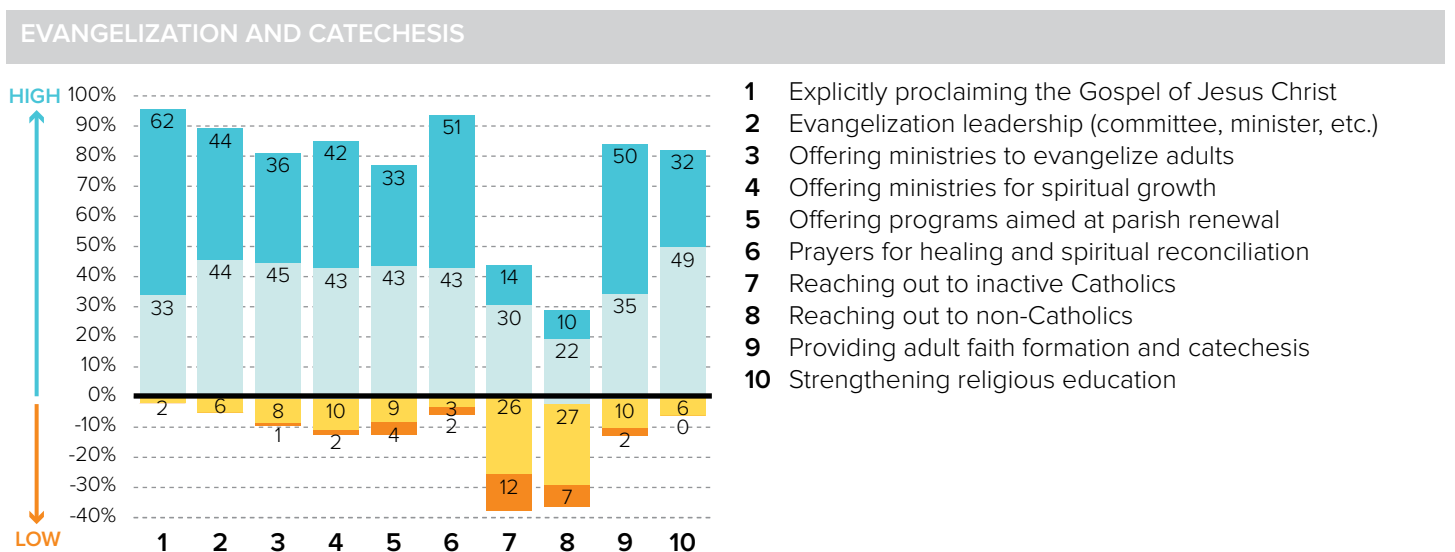
To the best of your ability, please evaluate how well your parish is doing in each of these areas.



- 1 Ensuring a Catholic education is financially viable
- 2 Keeping tuition affordable to all Catholics
- 3 Maintaining a Catholic identity
- 4 Using technology effectively
- 5 Ensuring academic success and Catholic formation



- 1 Christian service projects for the parish community
- 2 Christian service projects for youth and young adults
- 3 Building interfaith relationships
- 4 Collaborating with other community organizations



- 1 Explicitly proclaiming the Gospel of Jesus Christ
- 2 Evangelization leadership (committee, minister, etc.)
- 3 Offering ministries to evangelize adults
- 4 Offering ministries for spiritual growth
- 5 Offering programs aimed at parish renewal
- 6 Prayers for healing and spiritual reconciliation
- 7 Reaching out to inactive Catholics
- 8 Reaching out to non-Catholics
- 9 Providing adult faith formation and catechesis
- 10 Strengthening religious education

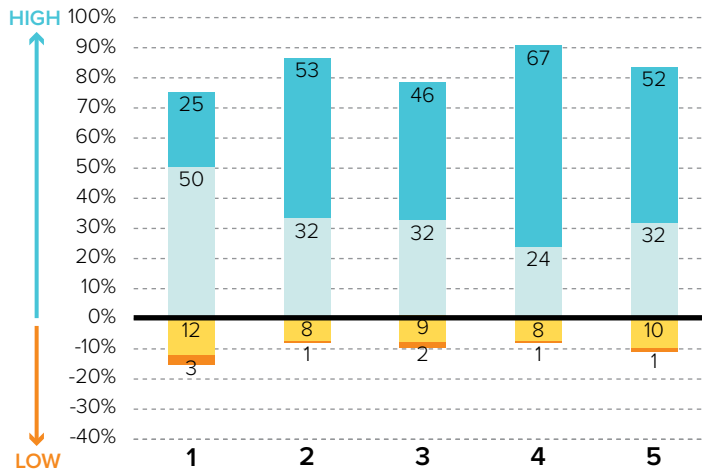
ST. JANE FRANCES DE CHANTAL

STERLING HEIGHTS, MI / CENTRAL MACOMB VICARIATE / NORTHEAST REGION

KEY
■ % Excellent
■ % Good
■ % Fair
■ % Poor

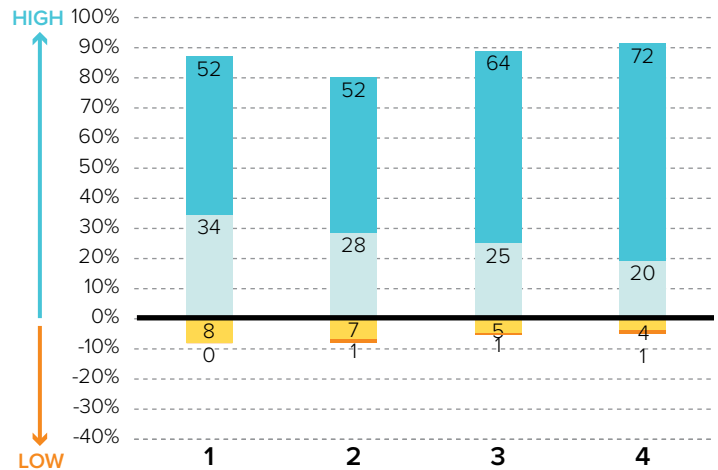
Survey Results Part I: Mission Priorities

PRIORITY AREA: LAY LEADERSHIP



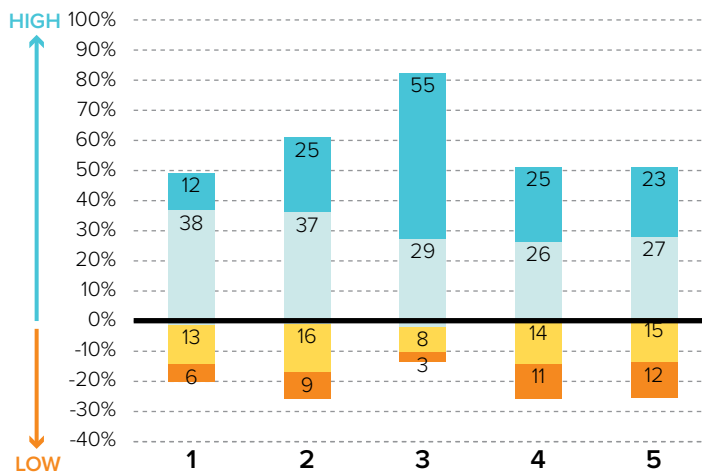
- 1 Training parishioners to identify their spiritual gifts
- 2 Increasing opportunities for lay involvement
- 3 Training and ministry for lay leaders
- 4 Encouraging parishioners to volunteer
- 5 Providing training opportunities for volunteers

PRIORITY AREA: STEWARDSHIP AND ADMINISTRATION



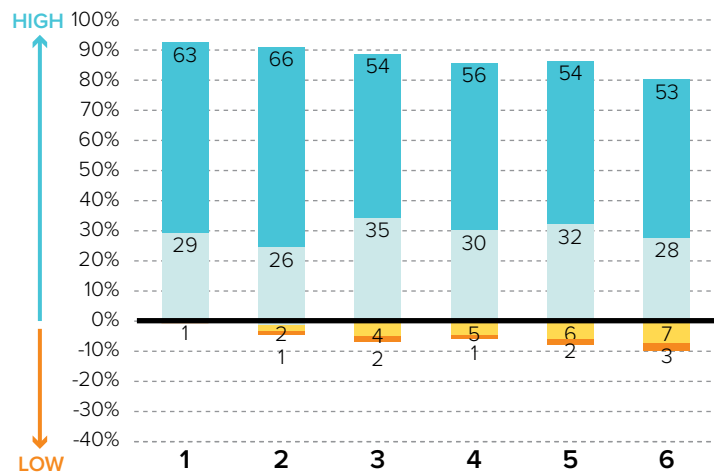
- 1 Communicating stewardship as a way of life
- 2 Forming an active Stewardship Commission
- 3 Supporting an active Finance Council
- 4 Financial transparency/accountability

PRIORITY AREA: VOCATIONS



- 1 Forming a vocations committee
- 2 Promoting vocations to priesthood/religious life
- 3 Promoting prayer for vocations
- 4 Inviting young people to consider Church vocations
- 5 Teaching vocation awareness

PRIORITY AREA: YOUTH AND YOUNG ADULTS



- 1 Providing regular meetings for teens
- 2 Providing special events for teens (e.g. retreats)
- 3 Engaging youth in parish life and liturgies
- 4 Providing regular meetings for young adults
- 5 Hosting special events for young adults
- 6 Engaging young adults in parish ministries and outreaches

ST. JANE FRANCES DE CHANTAL

STERLING HEIGHTS, MI / CENTRAL MACOMB VICARIATE / NORTHEAST REGION

Survey Results Part II: Faith and Parish Life

YEARS AT CURRENT PARISH

How many years have you attended Mass at your current parish?

	Count	%
Less than 1 year	2	1.7%
1-5 years	12	10.1%
6-10 years	37	31.1%
11-20 years	20	16.8%
21-30 years	26	21.8%
31+ years	22	18.5%
Total	119	100.0%

MASS ATTENDANCE

How often do you attend Mass?



REASONS TO MISS MASS

If you do not attend Mass regularly on Sundays, how much does each of the following explain why? % "somewhat" or "very"

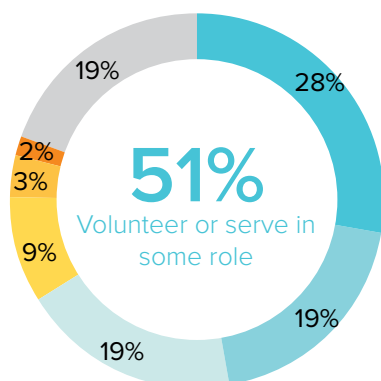
Demands of work, school, or sports	17.0%
Health problems or a disability	13.4%
Family concerns and needs	7.7%
Masses are boring/irrelevant to me	4.5%
Clusters, mergers, and closures of parishes	3.1%
Lack of children's ministries	3.0%
Divorce or marriage outside of Church	1.5%
The pastor is not welcoming	1.5%
The parish is not welcoming	0.0%

REGISTRATION

Are you a registered member at your current parish?



INVOLVEMENT IN THE PARISH



Do you serve, or have you ever served in any of the following roles in your parish?

KEY

- Volunteer (e.g. catechist, Vacation Bible School)
- Member of a parish council, commission, or committee
- Liturgical ministries (e.g. usher, Eucharistic Minister, lector)
- Music ministries (e.g. choir, musician, director)
- Parish support staff (e.g. secretary, maintenance)
- Parish staff (e.g. youth minister, business manager, DRE)
- None of the above

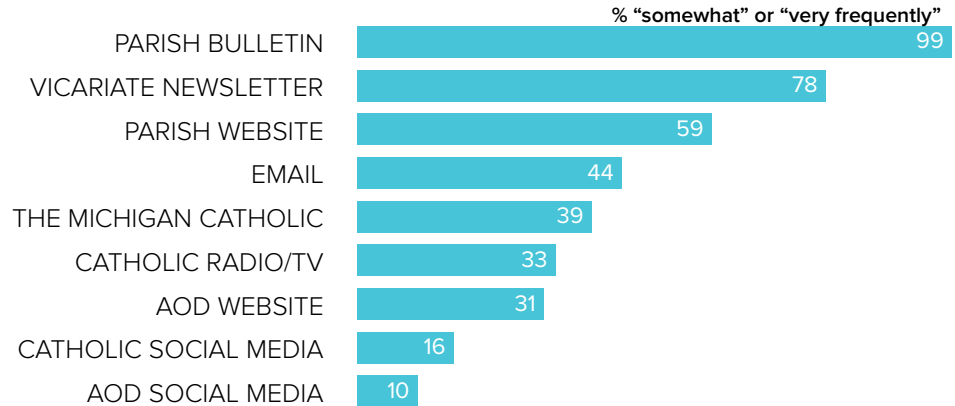
ST. JANE FRANCES DE CHANTAL

STERLING HEIGHTS, MI / CENTRAL MACOMB VICARIATE / NORTHEAST REGION

Survey Results Part II: Faith and Parish Life

COMMUNICATION METHODS

How often do you rely on the following for information about your parish, the Archdiocese, or the Catholic Church?



PARISH CHARACTERISTICS

How important to you are these characteristics in a parish?

	% "very important"		% "very important"
Quality worship service	95.8%	Service activities	36.8%
Parish embraces Church teachings and values	85.0%	Contemporary music	34.9%
Daily and weekend Mass schedules	73.3%	Small group ministries (e.g. Bible Study)	30.9%
Children's ministries (for all age groups)	56.4%	Catholic school	25.9%
Traditional music	51.8%	Mass in language(s) other than English	6.1%
Opportunities for penance/confession	44.8%		
Devotions (rosary, adoration, etc.)	40.1%		
Parish social groups/gatherings	36.9%		

PASTOR CHARACTERISTICS

How important to you are these characteristics in a pastor?

	% "very important"
Welcoming spirit	87.5%
Ability to connect scripture to the present	84.4%
Engaging preaching style	82.6%
Manages parish resources effectively	79.2%
Invites people into a personal relationship w/ Jesus	77.2%
Values input from laity	73.3%
Communicates parish priorities	72.6%
Challenges people to live a life of discipleship	64.9%

CHALLENGES FACING THE CHURCH

How would you rate the following as challenges facing the Catholic Church in Southeast Michigan today?

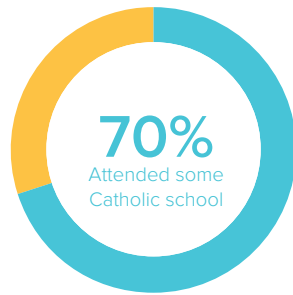
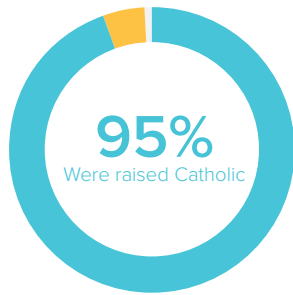
	% "serious challenge"
TOP 5 RESPONSES	
Shortage of priests/decline in vocations	94.1%
Society in general is less religious	64.1%
Church funds/financial management	62.9%
Engaging teens and young adults in parish life	62.2%
Clustering, merging, and closing of parishes	61.7%

ST. JANE FRANCES DE CHANTAL

STERLING HEIGHTS, MI / CENTRAL MACOMB VICARIATE / NORTHEAST REGION

Survey Results Part III: Demographics

CATHOLIC BACKGROUND AND EDUCATION



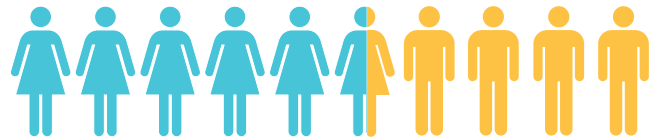
KEY

- Raised Catholic
- Converted to Catholicism
- Not Catholic

KEY

- Attended Catholic school
- Did not attend Catholic school

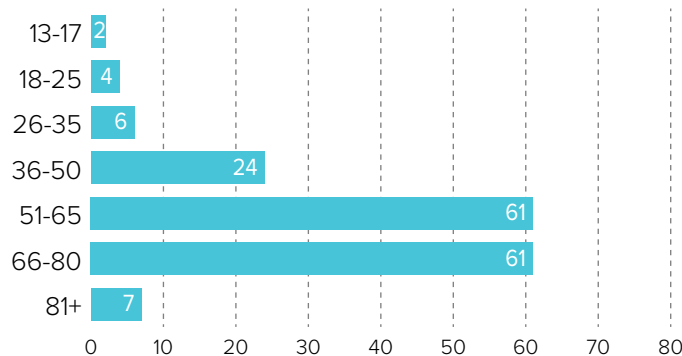
GENDER



57% WOMEN

43% MEN

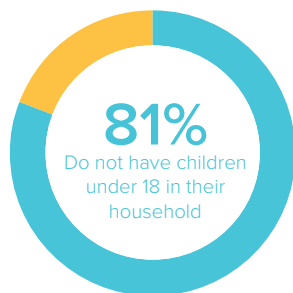
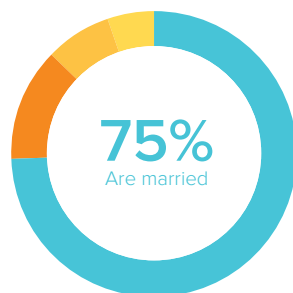
AGE



RACIAL OR ETHNIC BACKGROUND

	Count	%
White	156	94.5%
Black	1	.6%
Hispanic	1	.6%
Asian	5	3.0%
Native American	0	0.0%
Other	2	1.2%
Total	165	100.0%

MARITAL STATUS AND CHILDREN IN HOUSEHOLD



KEY

- Married or remarried
- Single, never married
- Divorced or separated
- Widowed

KEY

- Do not have children
- Have children

ESTIMATED HOUSEHOLD INCOME

	Count	%
\$19,000 or less	3	2.1%
\$20,000-39,999	22	15.5%
\$40,000-59,999	37	26.1%
\$60,000-79,999	37	26.1%
\$80,000-99,999	17	12.0%
\$100,000 +	26	18.3%
Total	142	100.0%