

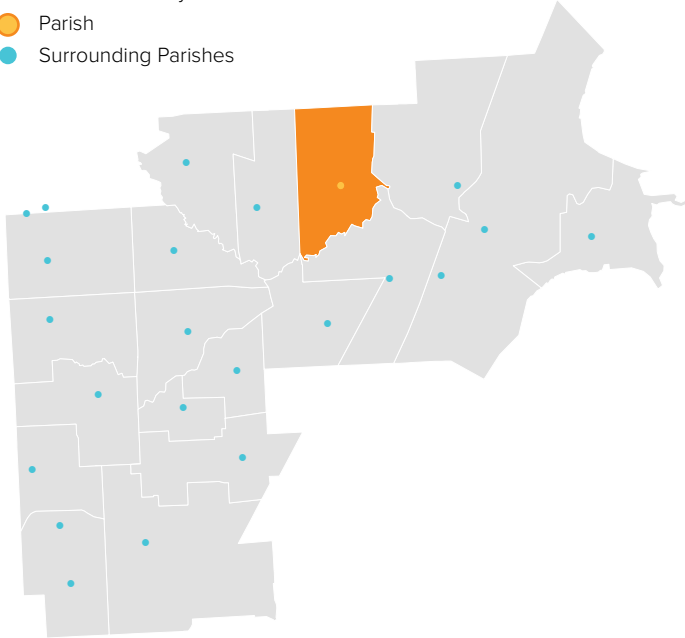
ST. PAUL OF TARSUS

CLINTON TOWNSHIP, MI / CENTRAL MACOMB VICARIATE / NORTHEAST REGION

Parish Profile and Survey Results

KEY

- Parish Boundary
- Parish
- Surrounding Parishes



TOTAL SURVEY RESPONSES

Parish ID	Name	responses
701	St. Paul of Tarsus	265

PARISH LOCATION AND BOUNDARY - WITHIN VICARIATE

PARISH CATHOLIC POPULATION FACTS

	2000	2013	% Change
Total Registered Households	1,381	1,116	-19.2%
Total Registered Individuals	4,143	3,125	-24.6%
% of HH in Parish Boundary		44%	
% of HH Outside Parish Boundary		56%	

KEY U.S. CENSUS FACTS

	2000	2010	% Change
Total Households	8,548	7,599	-11.1%
Total Population	21,053	21,285	1.1%
Median Household Income	\$55,419	\$55,757	0.6%
Median Age	33.9	33.4	-1.2%

PARISH FINANCIAL STATS

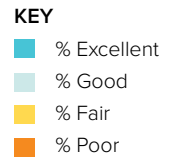
	2009	2013	% Change
Total Operating Income	\$553,216	\$610,861	10.4%
Total Operating Expenses	\$458,345	\$543,259	18.5%
LDP Debt	\$-	\$-	0.0%
AOD & MCC	N/A	\$-	N/A
Outstanding payables			
Total Savings	\$1,124,341	\$1,217,763	8.3%

PARISH SACRAMENTAL STATS (5 YR. TREND)

	2009	2013	% Change
Baptisms	29	44	51.7%
First Communion	29	41	41.4%
Confirmations	34	38	11.8%
Total Marriages	7	10	42.9%
Funerals	168	225	33.9%

ST. PAUL OF TARUSUS

CLINTON TOWNSHIP, MI / CENTRAL MACOMB VICARIATE / NORTHEAST REGION

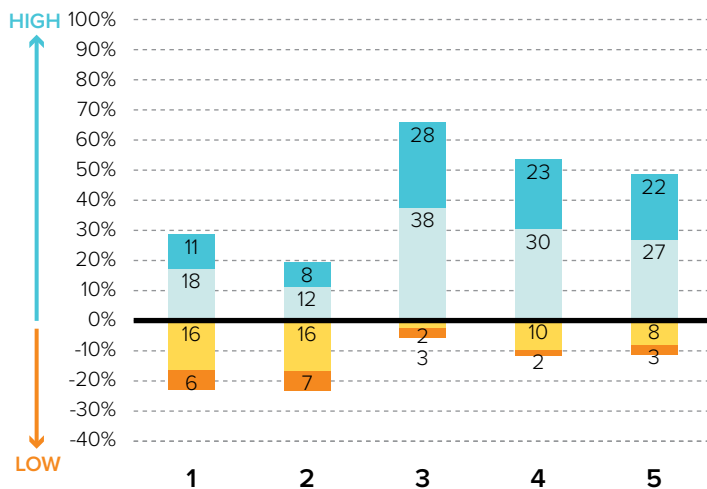


Survey Results Part I: Mission Priorities

The following graphs show how parishioners rated each of the objectives associated with a mission priority area. The graphs are split between positive values for high ratings (“good” or “excellent”) and negative values for lower ratings (“fair” or “poor”). “Don’t know” responses are not shown in the graphs at right to more easily show the split between high and low ratings.

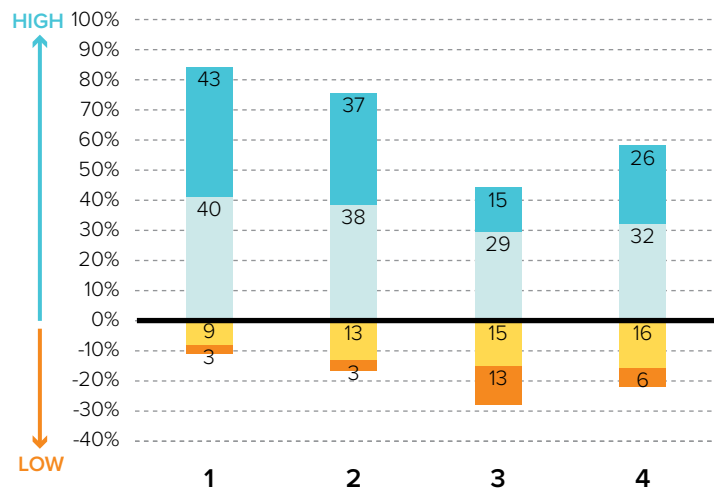
To the best of your ability, please evaluate how well your parish is doing in each of these areas.

PRIORITY AREA: CATHOLIC SCHOOLS



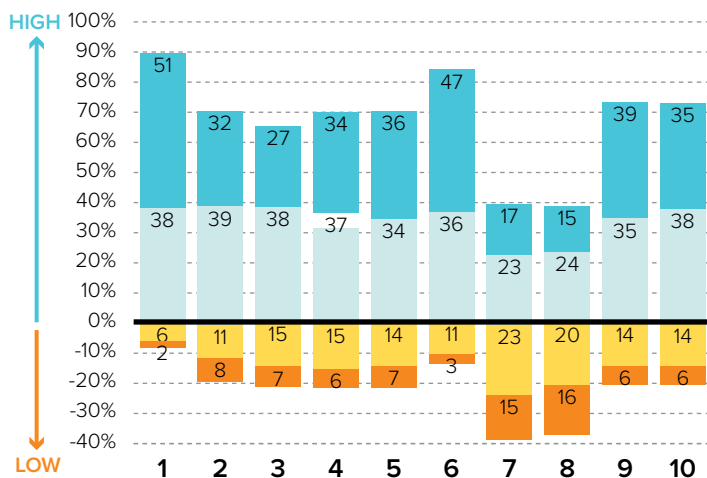
- 1 Ensuring a Catholic education is financially viable
- 2 Keeping tuition affordable to all Catholics
- 3 Maintaining a Catholic identity
- 4 Using technology effectively
- 5 Ensuring academic success and Catholic formation

PRIORITY AREA: CHRISTIAN SERVICE AND OUTREACH



- 1 Christian service projects for the parish community
- 2 Christian service projects for youth and young adults
- 3 Building interfaith relationships
- 4 Collaborating with other community organizations

EVANGELIZATION AND CATECHESIS



- 1 Explicitly proclaiming the Gospel of Jesus Christ
- 2 Evangelization leadership (committee, minister, etc.)
- 3 Offering ministries to evangelize adults
- 4 Offering ministries for spiritual growth
- 5 Offering programs aimed at parish renewal
- 6 Prayers for healing and spiritual reconciliation
- 7 Reaching out to inactive Catholics
- 8 Reaching out to non-Catholics
- 9 Providing adult faith formation and catechesis
- 10 Strengthening religious education

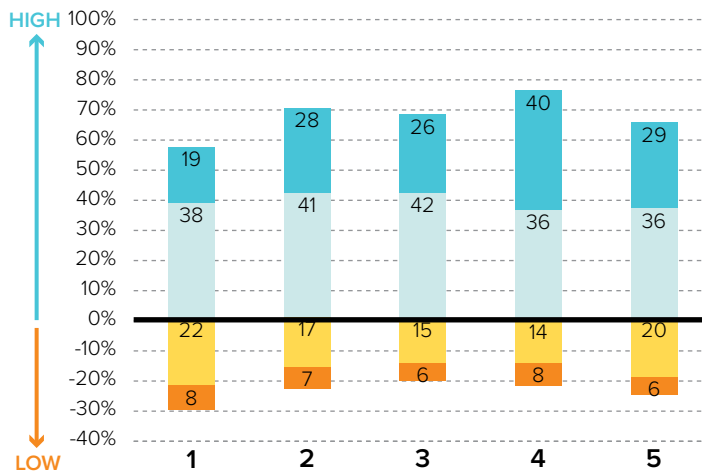
ST. PAUL OF TARSUS

CLINTON TOWNSHIP, MI / CENTRAL MACOMB VICARIATE / NORTHEAST REGION

KEY
■ % Excellent
■ % Good
■ % Fair
■ % Poor

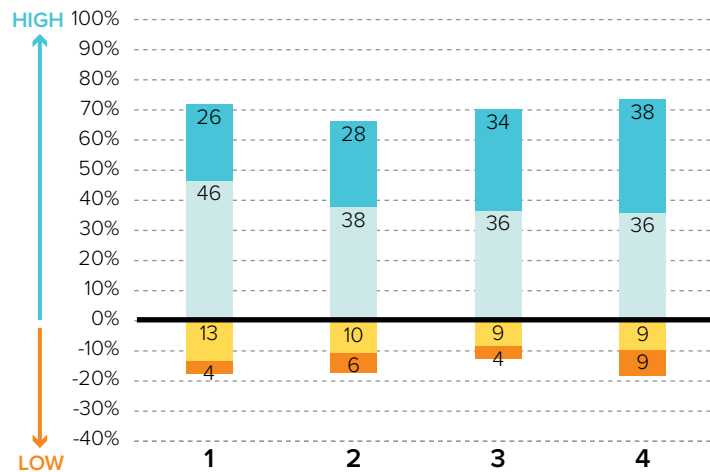
Survey Results Part I: Mission Priorities

PRIORITY AREA: LAY LEADERSHIP



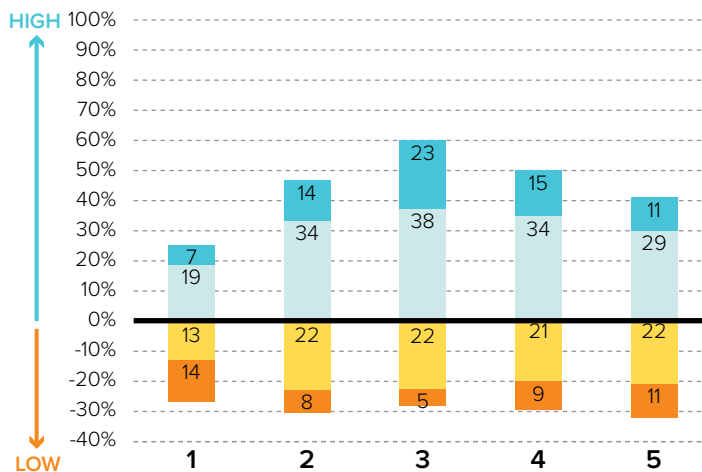
- 1 Training parishioners to identify their spiritual gifts
- 2 Increasing opportunities for lay involvement
- 3 Training and ministry for lay leaders
- 4 Encouraging parishioners to volunteer
- 5 Providing training opportunities for volunteers

PRIORITY AREA: STEWARDSHIP AND ADMINISTRATION



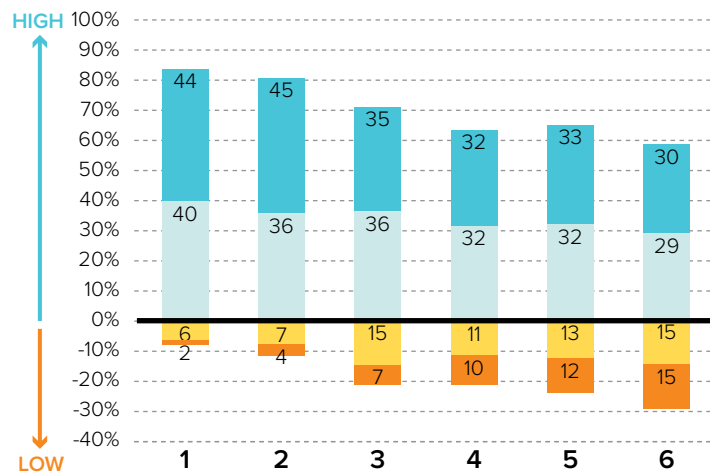
- 1 Communicating stewardship as a way of life
- 2 Forming an active Stewardship Commission
- 3 Supporting an active Finance Council
- 4 Financial transparency/accountability

PRIORITY AREA: VOCATIONS



- 1 Forming a vocations committee
- 2 Promoting vocations to priesthood/religious life
- 3 Promoting prayer for vocations
- 4 Inviting young people to consider Church vocations
- 5 Teaching vocation awareness

PRIORITY AREA: YOUTH AND YOUNG ADULTS



- 1 Providing regular meetings for teens
- 2 Providing special events for teens (e.g. retreats)
- 3 Engaging youth in parish life and liturgies
- 4 Providing regular meetings for young adults
- 5 Hosting special events for young adults
- 6 Engaging young adults in parish ministries and outreaches

ST. PAUL OF TARSUS

CLINTON TOWNSHIP, MI / CENTRAL MACOMB VICARIATE / NORTHEAST REGION

Survey Results Part II: Faith and Parish Life

YEARS AT CURRENT PARISH

How many years have you attended Mass at your current parish?

	Count	%
Less than 1 year	4	2.2%
1-5 years	27	15.2%
6-10 years	30	16.9%
11-20 years	66	37.1%
21-30 years	48	27.0%
31+ years	3	1.7%
Total	178	100.0%

MASS ATTENDANCE

How often do you attend Mass?



REASONS TO MISS MASS

If you do not attend Mass regularly on Sundays, how much does each of the following explain why? % "somewhat" or "very"

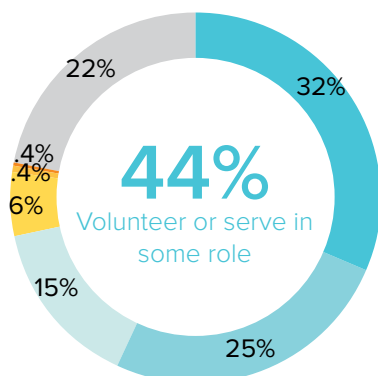
Demands of work, school, or sports	31.5%
Family concerns and needs	19.3%
The pastor is not welcoming	14.4%
Masses are boring/irrelevant to me	10.1%
The parish is not welcoming	8.0%
Health problems or a disability	8.0%
Lack of children's ministries	6.8%
Divorce or marriage outside of Church	3.4%
Clusters, mergers, and closures of parishes	3.4%

REGISTRATION

Are you a registered member at your current parish?



INVOLVEMENT IN THE PARISH



Do you serve, or have you ever served in any of the following roles in your parish?

KEY

- Volunteer (e.g. catechist, Vacation Bible School)
- Liturgical ministries (e.g. usher, Eucharistic Minister, lector)
- Member of a parish council, commission, or committee
- Music ministries (e.g. choir, musician, director)
- Parish staff (e.g. youth minister, business manager, DRE)
- Parish support staff (e.g. secretary, maintenance)
- None of the above

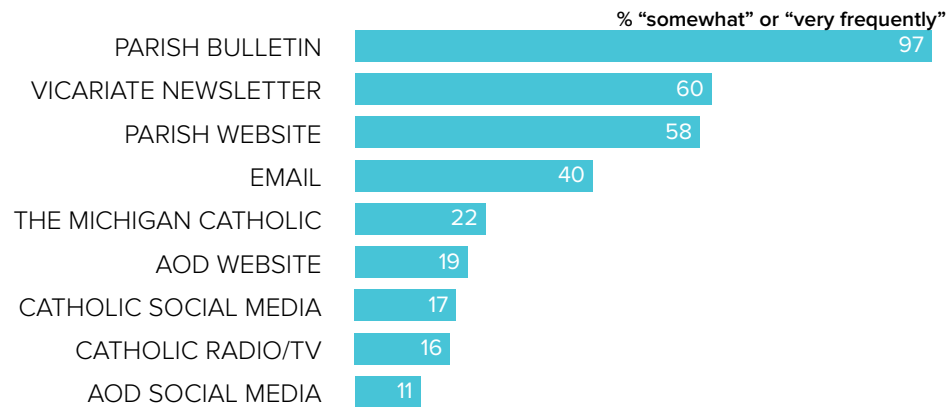
ST. PAUL OF TARSUS

CLINTON TOWNSHIP, MI / CENTRAL MACOMB VICARIATE / NORTHEAST REGION

Survey Results Part II: Faith and Parish Life

COMMUNICATION METHODS

How often do you rely on the following for information about your parish, the Archdiocese, or the Catholic Church?



PARISH CHARACTERISTICS

How important to you are these characteristics in a parish?

	% "very important"		% "very important"
Quality worship service	89.1%	Traditional music	33.1%
Parish embraces Church teachings and values	78.0%	Opportunities for penance/confession	27.3%
Daily and weekend Mass schedules	69.5%	Catholic school	26.7%
Children's ministries (for all age groups)	59.2%	Contemporary music	22.5%
Parish social groups/gatherings	37.0%	Mass in language(s) other than English	1.8%
Devotions (rosary, adoration, etc.)	35.5%		
Service activities	34.1%		
Small group ministries (e.g. Bible Study)	33.9%		

PASTOR CHARACTERISTICS

How important to you are these characteristics in a pastor?

	% "very important"
Welcoming spirit	96.0%
Ability to connect scripture to the present	94.3%
Invites people into a personal relationship w/ Jesus	89.7%
Engaging preaching style	89.1%
Manages parish resources effectively	82.3%
Values input from laity	75.4%
Communicates parish priorities	73.1%
Challenges people to live a life of discipleship	70.5%

CHALLENGES FACING THE CHURCH

How would you rate the following as challenges facing the Catholic Church in Southeast Michigan today?

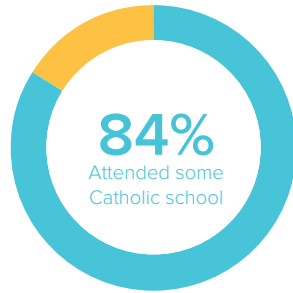
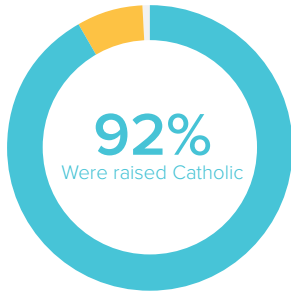
	% "serious challenge"
TOP 5 RESPONSES	
Shortage of priests/decline in vocations	88.5%
Engaging teens and young adults in parish life	72.3%
Society in general is less religious	65.9%
Priest sexual abuse	60.5%
Church funds/financial management	54.7%

ST. PAUL OF TARSUS

CLINTON TOWNSHIP, MI / CENTRAL MACOMB VICARIATE / NORTHEAST REGION

Survey Results Part III: Demographics

CATHOLIC BACKGROUND AND EDUCATION



KEY

- Raised Catholic
- Converted to Catholicism
- Not Catholic

KEY

- Attended Catholic school
- Did not attend Catholic school

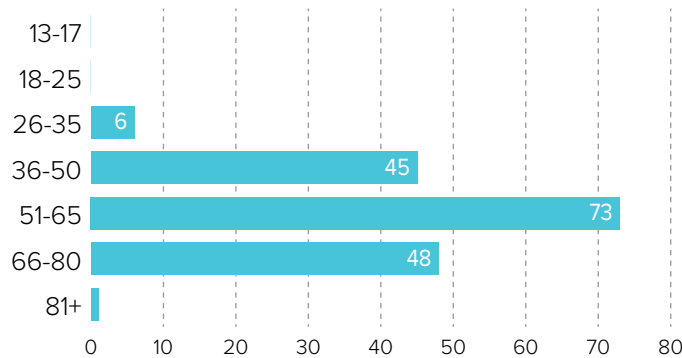
GENDER



59% WOMEN

41% MEN

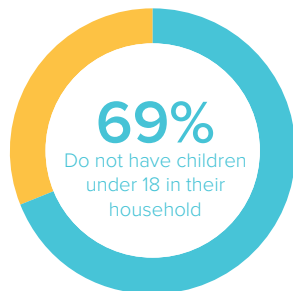
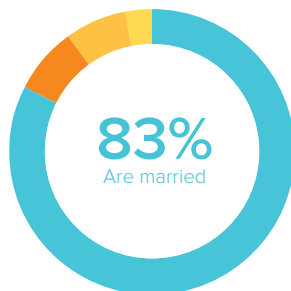
AGE



RACIAL OR ETHNIC BACKGROUND

	Count	%
White	166	97.1%
Black	1	.6%
Hispanic	1	.6%
Asian	2	1.2%
Native American	0	0.0%
Other	1	.6%
Total	171	100.0%

MARITAL STATUS AND CHILDREN IN HOUSEHOLD



KEY

- Married or remarried
- Divorced or separated
- Widowed
- Single, never married

KEY

- Do not have children
- Have children

ESTIMATED HOUSEHOLD INCOME

	Count	%
\$19,000 or less	2	1.4%
\$20,000-39,999	14	9.6%
\$40,000-59,999	29	19.9%
\$60,000-79,999	31	21.2%
\$80,000-99,999	22	15.1%
\$100,000 +	48	32.9%
Total	146	100.0%